

# Dongguan Pan American Electronics Co., Ltd

[www.panamericanelectronics.com](http://www.panamericanelectronics.com)

Building 6, Tian An Cyber Park, No. 88,  
Jinyuan Road, Zhongtang Town, Dongguan,  
Guangdong, China 523220



## 2023

Catalogue



 **COMMERCIAL  
FIXTURES**

 **HAZARDOUS  
LOCATIONS  
LUMINAIRES**

 **LED  
GROW  
LIGHT**

 **STREET & AREA  
LUMINAIRES**



Copy Rights Reserved  
Your Best LED Solution Provider in China

**Made in China, Indonesia, Europe, and Mexico**



Dongguan Pan American Electronics Co., Ltd is a global leader in commercial and industrial LED lighting.

Founded in 2006 in Guangdong, China, Pan American was a LED industry pioneer in the design and manufacturing of linear LED T8 lamps. Since that time, Pan American has grown to be one of the highest volume manufacturers of all types of T8 and T5 lighting as well as a wide array of LED retrofit kits and luminaires for interior and exterior applications.

Pan American's manufacturing facilities now exceed 400,000 sq. ft. with over 1000 employees.

Pan American has built a global reputation for innovative design and product reliability. It has millions of lamps and luminaires dependably operating around the world, providing an enhanced quality of light, safety, and energy efficiency. To accomplish a very high volume production while maintaining the quality of products, Pan American has a high level of integrated testing and quality control as a part of all manufacturing processes. Additionally, it maintains a complete and comprehensive portfolio of compliance and performance certifications in all markets and industry segments.

Pan American has built both a robust production infrastructure and a global management team to support product design, supply chain logistics, finance, and marketing. Moreover, Pan American has become very successful by building a global value chain where the team work of dedicated individuals build products that save energy, contribute to a cleaner environment and create business opportunities for economic prosperity around the world.

Both the LED Lighting Industry and the dynamics of global business are changing rapidly. As with many obstacles in the past and in the face of more to come, Pan American remains true to one simple motivating idea: Bring High Efficiency to the Earth.

## Marks



REGISTRATION NO. Q1-3982

# Certificate of Registration

The American Petroleum Institute certifies that the quality management system of

**DONGGUAN PAN AMERICAN ELECTRONICS CO., LTD.**

**No. 175, Beiwang Road**

**Zhongtang Town**

**Dongguan City, Guangdong Province**

**People's Republic of China**

has been assessed by the American Petroleum Institute and found to be in conformance with the following:

## API Specification Q1

The scope of this registration and the approved quality management system applies to the:

**Design, Manufacture, Sales and Service of LED Explosion Proof Lights**

API approves the organization's justification for excluding:

**Validation of Processes**



**Effective Date:**

**AUGUST 12, 2021**

**Expiration Date:**

**AUGUST 12, 2024**

**Registered Since:**

**AUGUST 12, 2021**

*Asma C. P. Al-Jarrah*

**Vice President of Global Industry Services**

This certificate is valid for the period specified herein. The registered organization must continually meet all requirements of API Spec Q1, *Specification for Quality Programs for the Petroleum, Petrochemical and Natural Gas Industry*, and the requirements of the Registration Agreement. Registration is maintained and regularly monitored through annual full system audits. This certificate has been issued from API offices located at 200 Massachusetts Avenue, NW Suite 1100, Washington, DC 20001-5571, U.S.A. It is the property of API, and must be returned upon request. **To verify the authenticity of this certificate, go to [www.api.org/compositelist](http://www.api.org/compositelist).**

2020-160 | 06.20 | Digital





HAZARDOUS LOCATION LUMINAIRES



HAZARDOUS LOCATION LUMINAIRES

► The Venas Hazardous Location series provides a complete range of certified explosion-proof lighting including fixed and portable work lights, flood lights, area lights, emergency lights, warning lights, surface, pole, and wall mounting lighting, linear lighting, and accessories.

Venas Hazardous Location series draws from years of experience in research and design, a technical knowledge base, advanced in-house testing facility, high capacity manufacturing, and quality assurance systems to serve industrial customers around the globe.

- Suitable for all kinds of Hazardous Locations including but not limited to the petrochemical industry, chemical industry, painting industry, wine industry, food industry, mining locations, and marine locations.
- Top safety, high quality, and long lifespan.
- Full line certification to requirements of UL1598/UL1598A/UL844/IECEX/ATEX/ABS/DNV/API Spec Q1.
- Suitable for petrochemical, marine, oil and gas, airspace, food, metal industry, and other harsh environments.

► A Series

Wide and narrow optics for uniform illumination. Copper free aluminum body and corrosion resistant frame. Up to 50,000 hours LED service life. Valid over the entire temperature range from -40°C to 50°C (-40 °F to 122°F).



Model:	EX-20W A2YZDA	EX-40W A2YZDA	EX-60W A2YZDA	EX-80W AYZDA	EX-100W AYZDA	EX-150W A3YZDA	EX-200W A3YZDA	EX-250W A4YZDA	EX-300W A4YZDA	EX-400W A4YZDA
Rated Wattage(W):	20	40	60	80	100	150	200	250	300	400
Rated Lumen(Lm):	2,800	5,600	8,400	11,200	14,000	21,000	28,000	35,000	42,000	56,000
Dimension(mm):	320x240x160					380x230x188		419x300x210		
Voltage Option:	AC100-277V/DC12-48V/AC200-480V									
CCT:	2,200-7,000K									
Beam Angle(Deg):	40/60/90/120									
CRI:	>70									
Control Option:	0-10V DC									
Protection Class:	IP66									
Mounting:	Ceiling Mounting, Wall Mounting, Pole Mounting, Arm Mounting, Stanchion Mounting, Wall Mounting to Junction Box									
Compliance:	ETL/UL1598/UL1598A/UL844/IECEX/ATEX/ABS/CB/API Spec Q1/CSA									
Rating:	Class I ,Division 2; Class II , Division 1; Class II , Division 2;ClassIII; Zone 1&2, Zone 21&22									

► B Series

Copper free aluminum housing. High impact resistance. Various installation methods. Stainless steel hardware. Replaceable LED driver board & driver. Marine rated powder coating.



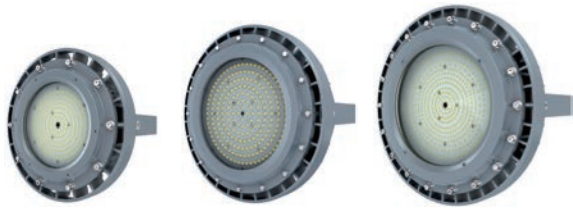
Model:	EX-xxW BYZDA	EX-xxW B2YZDA	EX-xxW B3YZDA	EX-xxW B4YZDA	EX-xxW B5YZDA
Rated Wattage(W):	60/80	20/40	100/150/200	250/300/350/400	80/100
Rated Lumen(Lm):	8,400/11,200	2,800/5,600	14,000/21,000/28,000	35,000/42,000/49,000/56,000	8,400/14,000
Dimension(mm):	243x230x170	Ø268x128	371x370x197	Ø480x241	345x329x165
Voltage Option:	AC100-277V/DC12-48V/AC200-480V				
CCT:	2,200-7,000K				
Beam Angle(Deg):	40/60/90/120				
CRI:	>70				
Control Option:	0-10V DC				
Protection Class:	IP66				
Mounting:	Ceiling Mounting, Wall Mounting, Pole Pendant Mounting, Stanchion Mounting, Wall Mounting				
Compliance:	ETL/UL1598/UL1598A/UL844/IECEX/ATEX/ABS/CB/API Spec Q1/CSA				
Rating:	Class I ,Division 2; Class II , Division 1; Class II , Division 2;ClassIII; Zone 1&2, Zone 21&22				



HAZARDOUS LOCATION LUMINAIRES

► C Series

High quality SMT LED and Meanwell Driver.  
Heavy-duty and high impact resistance.  
Replaceable LED board and drivers. Marine  
rating powder coated finish treatment. Glass  
lens or polycarbonate lens to make various  
beam angles.



Model:	EX-20W C2YZDA	EX-40W C2YZDA	EX-60W C2YZDA	EX-80W C2YZDA	EX-100W C2YZDA	EX-150W C2YZDA	EX-200W C3YZDA	EX-250W C3YZDA	EX-280W C3YZDA
Rated Wattage(W):	20	40	60	80	100	150	200	250	280
Rated Lumen(Lm):	2,800	5,600	8,400	11,200	14,000	21,000	28,000	35,000	39,200
Dimension[ØxH(mm)]:	495xØ358				523xØ406		546xØ442		
Voltage Option:	AC100-277V/DC12-48V/AC200-480V								
CCT:	2,200-7,000K								
Beam Angle(Deg):	40/60/90/120								
CRI:	>70								
Control Option:	0-10V DC								
Protection Class:	IP66								
Mounting:	Ceiling Mounting, Wall Mounting, Pole Mounting, Hook Pendant Mounting, Wall Mounting to Junction Box								
Compliance:	ETL/UL1598/UL1598A/UL844/IECEX/ATEX/ABS/CB/API Spec Q1/CSA								
Rating:	Class I, Division 1 & 2; Class II, Division 1; Class II, Division 2; Class III; Zone 1 & 2, Zone 21 & 22								

► D Series

**Two product types:**  
**Flame-proof type, Flame-proof and increased safe type**

High quality SMT LED and Meanwell Driver.  
Heavy-duty and high impact resistance.  
Replaceable LED board and drivers. Marine  
rating powder coated finish treatment. Glass  
lens or polycarbonate lens to make various  
beam angles.



Model:	EX-20W D2YZDA	EX-40W D2YZDA	EX-60W D2YZDA	EX-80W D2YZDA	EX-100W DYZDA	EX-150W DYZDA	EX-200W DYZDA
Rated Wattage(W):	20	40	60	80	100	150	200
Rated Lumen(Lm):	2,800	5,600	8,400	11,200	14,000	21,000	28,000
Dimension(mm):	294x294x243				399x287x254		
Voltage Option:	AC100-277V/DC12-48V/AC200-480V						
CCT:	2,200-7,000K						
Beam Angle(Deg):	40/60/90/120						
CRI:	>70						
Control Option:	0-10V DC						
Protection Class:	IP66						
Mounting:	Ceiling Mounting, Wall Mounting, Pole Mounting						
Compliance:	ETL/UL1598/UL1598A/UL844/IECEX/ATEX/ABS/CB/API Spec Q1/CSA						
Rating:	Class I ,Division 2; Class II , Division 1; Class II , Division 2;ClassIII; Zone 1&2, Zone 21&22						

HAZARDOUS LOCATION LUMINAIRES

► FLA1/FLA1e Series

**FLA1: Flame-proof type**  
**FLA1e: Flame-proof and increased safe type**

0-10V dimming. Emergency function - up to 90  
minutes back-up supply time. High-quality  
copper free aluminum housing, excellent cooling  
performance. Replaceable LED board & driver,  
flexible and convenient maintenance. Marine  
rating powder coated finish treatment, outstanding  
corrosion resistance.



Front view:  
FLA1/FLA1e

Back view:  
FLA1

Back view:  
FLA1e

Model:	EX-XXXW FLA1YZD	EX-XXXW FLA1eYZD
Rated Wattage(W):	20-100	20-100
Rated Lumen(Lm):	2,600-13,000	2,600-13,000
Dimension(mm):	240x300x98.5	240x318x98.5
Voltage Option:	AC100-277V/DC36V	
CCT:	2,200-7,000K	
Beam Angle(Deg):	40°/60°/90°/120°	
CRI:	>70	
Control Option:	0-10V DC	
Protection Class:	IP66/IK10	
Compliance:	ATEX/IECEX	
Rating:	Class I, Division 1, Zone 1&2, Zone 21&22	

► FLA2/FLA2e Series

**FLA2: Flame-proof type**  
**FLA2e: Flame-proof and increased safe type**

0-10V dimming. Emergency function - up to 90  
minutes back-up supply time. High-quality  
copper free aluminum housing, excellent cooling  
performance. Replaceable LED board & driver,  
flexible and convenient maintenance. Marine  
rating powder coated finish treatment, outstanding  
corrosion resistance.



Front view:  
FLA2/FLA2e

Back view:  
FLA2

Back view:  
FLA2e

Model:	EX-XXXW FLA2YZD	EX-XXXW FLA2eYZD
Rated Wattage(W):	20-200	20-200
Rated Lumen(Lm):	2,600-26,000	2,600-26,000
Dimension(mm):	330x380x103	330x380x103
Voltage Option:	AC100-277V/DC36V	
CCT:	2,200-7,000K	
Beam Angle(Deg):	40°/60°/90°/120°	
CRI:	>70	
Control Option:	0-10V DC	
Protection Class:	IP66/IK10	
Compliance:	ATEX/IECEX	
Rating:	Class I, Division 1, Zone 1&2, Zone 21&22	



HAZARDOUS LOCATION LUMINAIRES

► FLA3 Series

Two product types:  
Flame-proof type, Flame-proof and increased safe type

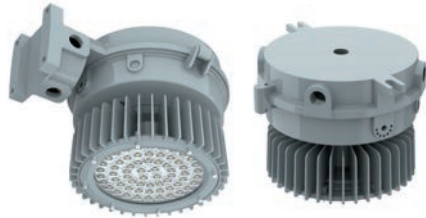
Only 320W with emergency function - up to 3 hours emergency time. Non-dimmable. Aluminum alloy A356 housing with powder coating surface treatment, great cooling performance and corrosion resistance.



Model:	EX-xxWFLA3-xx xx xx
Rated Wattage(W):	Max. 500
Rated Lumen(Lm):	Max. 65,000
Dimension(mm):	590x464x165
Voltage Option:	AC100-277V
CCT:	2,200-7,000K
Beam Angle(Deg):	40°/60°/90°/120°
CRI:	>70
Surge Protection:	10/20 kV
Protection Class:	IP66/IK10
Compliance:	ATEX/IECEX
Rating:	Zone 1&2, Zone 21&22

► FLAA2 Series

Best-in-class efficacy-up to 140 lumens per watt. Professional light distribution design, uniform and comfortable lighting. Various mounting way to meet different requirements.



Model:	FLAA2-xxxW X*YZDEFG	FLAA2-xxxW X*YZDEFG
Rated Wattage(W):	20/40/50/60/80/100	20/40/50/60/80/100/120/150/180/200
Rated Lumen(Lm):	2,800/5,600/7,000/8,400/11,200/14,000	2,800/5,600/7,000/8,400/11,200/14,000/16,800/21,000/25,200/28,000
Dimension(mm):	Ø381x406.4	Ø381x457.2
Voltage Option:	AC100-277V/220-480V	
CCT:	2,200-7,000K	
Beam Angle(Deg):	40°/60°/90°/120°	
CRI:	80	
Working Temperature:	-40°C to +60°C	
Mounting:	Ceiling Mounting, Wall Mounting, Pole Mounting, Bracket Mounting, Pendant Mounting	
Protection Class:	IP66	
Compliance:	ATEX/IECEX	
Rating:	Zone 2, Zone 21&22	

HAZARDOUS LOCATION LUMINAIRES

► FLB Series

Anti-static and anti-corrosion coating. Thermal resistance, corrosion resistance, high light transmission lens. Advanced quadratic light distribution design results in high uniformity. Easy and simple installation.



Model:	EX-FLB A; EX-FLB B; EX-FLB C
Rated Wattage(W):	A series: 1 x (15 to 28)W, 2 x (15 to 28)W, 3x (15 to 28)W
	B series: 1 x (20 to 45)W, 2 x (20 to 45)W, 3x (20 to 45)W
	C series: 1 x (36 to 72)W, 2 x (36 to 72)W, 3x (36 to 72)W
LED Tube Length:	2FT(0.6m), 4FT(1.2m)
Voltage Option:	AC100-277, 50/60Hz or DC12-48V
Ambient Temperature :	-40°C to +60°C
Beam Angle(Deg):	30-180
CCT:	3,000-6,500K
Backup Battery:	3 Hours
Protection Class:	IP66/67/68
Mounting:	Wall Mounting, Surface Mounting, Hook Pendant Mounting, Ring Pendant Mounting, Pole Mounting
Compliance:	IECEX/ATEX/CB
Rating:	Zone 1 & 2, Zone 21 & 22

► FLC Series

ATEX and IECEx Certified. Die-cast aluminum body and frame-corrosion resistant. Innovative design with excellent heat dissipation performance. Heat-sinking technology ensures long lifespan and low light decline.



Model:	EX-xxW FLC2 AZDA	EX-xxW FLC2 AZDA	EX-xxW FLC4 AZDA	EX-xxW FLC4 AZDA	EX-xxW FLC5 AZDA	EX-xxW FLC5 AZDA
Rated Wattage(W):	20	40	50	80	50	80
Dimension(mm):	785x178x96		1303x178x96		1618x178x96	
Voltage Option:	AC 100-277, 50/60Hz or DC 36V					
Ambient Temperature :	-40°C to +65°C					
Efficiency:	130 lm/W					
Beam Angle(Deg):	40/60/90					
CCT:	2,700-6,500K					
Dimming:	0-10V					
Protection Class:	IP66/67					
Mounting:	Bracket Surface Mounting, Hook and Rope Mounting, Pole Mounting					
Compliance:	IECEX/ATEX/CB					
Rating:	Class I ,Division 2; Class II , Division 1; Class II , Division 2;Class III; Zone 1&2, Zone 21&22					



HAZARDOUS LOCATION LUMINAIRES

► FLD Series

Die-cast aluminum body and frame-corrosion resistant. Innovative design with excellent heat dissipation performance. Heat-sinking technology ensures long lifespan and long light decline.



Model:	EX-xxW-FLD12 YZD	EX-xxW-FLD14 YZD	EX-xxW-FLD22 YZD	EX-xxW-FLD24 YZD
Rated Wattage(W):	20/40/60/80	40/60/80/120	40/60/80/120	60/80/100/120/160/240
Dimension(mm):	640x305x94	1250x305x94	640x604x94	49.2x23.8x3.7
Voltage Option:	AC100-277V			
Ambient Temperature :	-40°C to +65°C			
Efficiency:	130 lm/W			
Beam Angle(Deg):	120°			
CCT:	2700K-7000K			
Protection Class:	IP66			
Mounting:	Ceiling Mounting/Pandent Mounting/Embedded Mounting			
Compliance:	UL844;60079			
Rating:	Class I ,Division 2; Class II , Division 1; Class II , Division 2;ClassIII; Zone 1&2, Zone 21&22			

► FLE Series

ATEX and IECEx Certified. Die-cast aluminum body and frame-corrosion resistant. Innovative design with excellent heat dissipation performance. Heat-sinking technology ensures long lifespan and low light decline.



Model:	EX-20/40W-FLE2 AZDA	EX-50/80W-FLE4 AZDA	EX-50/80W-FLE5 AZDA
Rated Wattage(W):	20/40	50/80	50/80
Dimension(mm):	675x157x216	1275x157x216	1597x157x216
Voltage Option:	AC 100-277, 50/60Hz or DC 36V		
Ambient Temperature :	-40°C to +65°C		
Efficiency:	130 lm/W		
Beam Angle(Deg):	40/60/90		
CCT:	2,700-6,500K		
Dimming:	0-10V		
Protection Class:	IP66		
Mounting:	Bracket Surface Mounting, Hook and Rope Mounting, Pole Mounting		
Compliance:	IECEX/ATEX/CB		
Rating:	Class I ,Division 2; Class II , Division 1; Class II , Division 2;ClassIII; Zone 1&2, Zone 21&22		

HAZARDOUS LOCATION LUMINAIRES

► FLF Series

FLF Series is the ideal choice for marine and hazardous applications. Available in 5 lengths. Innovative design with excellent heat dissipation performance. Heat-sinking technology ensures long lifespan and low light decline.



Model:	EX-xxxW-FLF1 AZDA	EX-xxxW-FLF2 AZDA	EX-xxxW-FLF3 AZDA	EX-xxxW-FLF4 AZDA	EX-xxxW-FLF5 AZDA
Rated Wattage(W):	10/20/30	20/30/40/50	40/50/60/70	40/50/60/70/80	60/70/80/90/100
Efficiency:	130 lm/W				
Voltage Option:	AC100-277V, 50/60Hz				
Emergency Time :	>1.5H				
CCT:	2,200-6,500K				
CRI:	>70				
Ambient Temperature :	-40°C to +65°C				
Protection Class:	IP66				
Mounting:	Wall Mounting, Hook Mounting, Pole Mounting				
Rating:	Class I ,Division 2; Class II , Division 1; Class II , Division 2;ClassIII; Zone 1&2, Zone 21&22				

► G Series

Copper free aluminum housing. Heavy duty and high impact resistance design. Stainless steel hardware. Anti-static and anti-corrosion coating. Flat and globe glass lens. Replaceable LED board & driver. Marine rated powder coating.



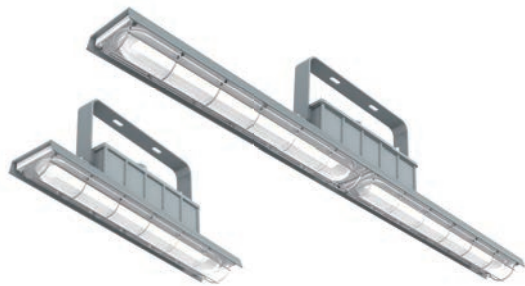
Model:	EX-10W GYZDA	EX-20W GYZDA	EX-30W GYZDA	EX-40W GYZDA	EX-50W GYZDA
Rated Wattage(W):	10	20	30	40	50
Rated Lumen(Lm):	1,400	2,800	4,200	5,600	7,000
Dimension(mm):	H312xØ175				
Voltage Option:	AC100-277V/DC12-48V				
CCT:	2,200-7,000K				
Beam Angle(Deg):	40/60/90/120				
CRI:	>70				
Control Option:	0-10V DC				
Protection Class:	IP66				
Mounting:	Ceiling Mounting, Wall Mounting, Pole Mounting, Pendant Mounting				
Compliance:	ETL/UL1598/UL1598A/UL844/IECEX/ATEX/ABS/CB/API Spec Q1				
Rating:	Class I, Division 1 & 2; Class II, Division 1; Class II, Division 2; Class III				



HAZARDOUS LOCATION LUMINAIRES

► H Series

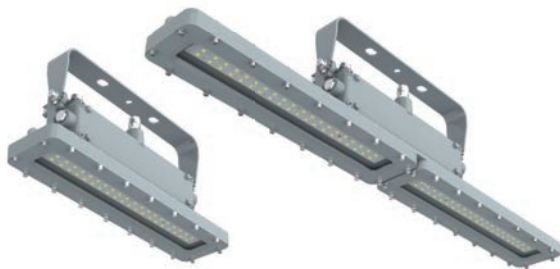
Copper free aluminum housing. Heavy duty and high impact resistance design. Stainless steel hardware. Replaceable LED board & driver. Thermal shock resistant PC diffuser. Design for humid, corrosive and dusty locations. Marine rated powder coating.



Model:	EX-20W H2YZDA	EX-40W H2YZDA	EX-40W H4YZDA	EX-60W H4YZDA	EX-80W H4YZDA
Rated Wattage(W):	20	40	40	60	80
Rated Lumen(Lm):	2,800	5,600	5,600	8,400	11,200
Dimension(mm):	599x122x119		1199x122x119		
Voltage Option:	AC100-277V/DC12-48V/AC200-480V				
CCT:	2,200-7,000K				
Beam Angle(Deg):	120				
CRI:	>70				
Control Option:	0-10V DC				
Protection Class:	IP65				
Mounting:	Ceiling Mounting, Wall Mounting, Pole Bracket Mounting				
Compliance:	ETL/UL1598/UL1598A/UL844/IECEX/ATEX/ABS/CB/API Spec Q1				
Rating:	Class I, Division 2; Class II, Division 1; Class II, Division 2; Class III; Zone 2, Zone 21 & 22				

► I Series

Copper-free aluminum housing. Stainless steel hardware. High impact resistance design. Replaceable LED board & driver. Marine rated powder coating. High explosion-proof rating for high harsh locations.



Model:	EX-20W I2YZDA	EX-40W I2YZDA	EX-60W I2YZDA	EX-60W I4YZDA	EX-80W I4YZDA	EX-100W I4YZDA	EX-120W I4YZDA
Rated Wattage(W):	20	40	60	60	80	100	120
Rated Lumen(Lm):	2,800	5,600	8,400	8,400	11,200	14,000	16,800
Dimension(mm):	592x140x132			1171x140x132			
Voltage Option:	AC100-277V/DC12-36V/AC200-480V						
CCT:	2,200-7,000K						
Beam Angle(Deg):	40/60/90/120						
CRI:	>70						
Control Option:	0-10V DC						
Protection Class:	IP66						
Mounting:	Ceiling Mounting, Wall Mounting, Pole Bracket Mounting, Chain Mounting, Pole Pendant Mounting						
Compliance:	ETL/UL1598/UL1598A/UL844/IECEX/ATEX/ABS/CB/API Spec Q1						
Rating:	Class I, Division I&2; Class II, Division 1; Class II, Division 2; Class III; ; Zone 1 & 2, Zone 21 & 22						

HAZARDOUS LOCATION LUMINAIRES

► O Series

Compact structure, small size and lightweight for easy installation. High vibration and high impact resistance. Protective metal cage against light potential damage. Durable deign for rugged environment and work site. Impact resistance and thermally stable toughened glass.



Model:	EX-10W OYZDA	EX-20W OYZDA	EX-30W OYZDA	EX-40W OYZDA
Rated Wattage(W):	10	20	30	40
Rated Lumen(Lm):	1,400	2,800	4,200	5,600
Dimension(mm):	H332xW145			
Voltage Option:	AC 100-277V/200-480V			
CCT:	2,200-7,000K			
Beam Angle(Deg):	40/60/90/120			
CRI:	>70			
Working Temperature:	-40°C to +60°C			
Housing Material:	Copper Free Aluminum			
Protection Class:	IP66			
Mounting:	Ceiling Mounting, Wall Mounting, Pole Mounting, Wall Mounting with Reflector			
Compliance:	UL844/UL1598A/ATEX/IECEX/API Spec Q1/CB			
Rating:	Class I ,Division 2; Class II , Division 1; Class II , Division 2;ClassIII; Zone 1&2, Zone 21&22			

► R Series

ATEX and IECEX certified. Heavy duty and impact resistance. Heat-sinking technology ensures long lifespan and low light decline. Waterproof and vapor/ dust/explosion proof.



Model:	EX-20W R2YZDA	EX-30W R2YZDA	EX-40W R4YZDA	EX-50W R4YZDA	EX-60W R4YZDA
Rated Wattage:	2×10W/2ft	2×15W/2ft	2×20W/4ft	2×25W/4ft	2×30W/4ft
Rated Lumen(Lm):	2,800	4,200	5,600	7,000	8,400
Dimension(mm):	698x221x122		1321x221x140		
Voltage Option:	AC 100-277V/200-480V				
CCT:	2,200-7,000K				
Beam Angle(Deg):	120				
CRI:	>70				
Control:	DC 0-10V				
Protection Class:	IP66				
Mounting:	Surface Mounting, Pendant Mounting, Wall Mounting, Pole Mounting				
Compliance:	UL1598/UL844/ATEX/IECEX/API Spec Q1/CB/UL1598A				
Rating:	Class I, Division 2; Class II, Division 2; Class III; Zone 1 & 2, Zone 21 & 22				

HAZARDOUS LOCATION LUMINAIRES

► **RR Series**

LED explosion proof light with internal switch. GRP (glass fibre-reinforced polyester resin) material. Water-proof, vapor-proof, dust-proof, and corrosion resistant.



Model:	EX-20W RR2YZDA	EX-30W RR2YZDA	EX-40W RR4YZDA	EX-50W RR4YZDA	EX-60W RR4YZDA
Rated Wattage:	2×10W/2ft	2×15W/2ft	2×20W/4ft	2×25W/4ft	2×30W/4ft
Rated Lumen(Lm):	2,800	4,200	5,600	7,000	8,400
Dimension(mm):	698x221x122		1321x221x140		
Voltage Option:	AC 100-277V/200-480V				
CCT:	2,200-7,000K				
Beam Angle(Deg):	120				
CRI:	>70				
Control:	DC 0-10V				
Material:	GRP (glass fibre-reinforced polyester resin)				
Protection Class:	IP66				
Mounting:	Surface Mounting, Pendant Mounting, Wall Mounting, Pole Mounting				
Compliance:	UL1598/UL844/ATEX/IECEX/API Spec Q1/CB/UL1598A				
Rating:	Class I, Division 2, Zone 1&2, Zone 21&22				

► **S Series**

**Two product types:**  
**Flame-proof type, Flame-proof and increased safe type**

Fixture constructed of die-casting aluminum and epoxy powder coat. Compact structure, small size and lightweight for easy installation. High vibration and impact resistant. Heat and impact resistant glass lens. Changeable light source and battery to make replacement very easy.



Model:	EX-20W S1YZDA	EX-40W S1YZDA	EX-60W S1YZDA	EX-80W S1YZDA	EX-100W S2YZDA	EX-150W S2YZDA	EX-200W S2YZDA
Rated Wattage(W):	20	40	60	80	100	150	200
Rated Lumen(Lm):	2,800	5,600	8,400	11,200	14,000	21,000	28,000
Dimension(mm):	W270xH304				W270xH461		
Voltage Option:	AC 100-277V/200-480V						
CCT:	2,200-7,000K						
Beam Angle(Deg):	40/60/90/120						
CRI:	>70						
Control:	DC 0-10V						
Protection Class:	IP66						
Mounting:	Bracket Surface Mounting, Pendant Mounting, Pole Mounting						
Compliance:	IECEX/ATEX/CB						
Rating:	Zone 1 & 2, Zone 21 & 22						

HAZARDOUS LOCATION LUMINAIRES

► **STA Series**

ATEX and IECEx certified. Copper free aluminum body and frame-corrosion resistant. Easy for angle adjustment. Heat-sinking technology ensures long lifespan and low light decline. High luminous efficacy-Up to 120-140 Lm/W. Valid over the entire temperature range from -40°C to 60°C (-40 °F to 140°F).



Model:	EX-300W STA1	EX-100W STA2	EX-150W STA2	EX-200W STA2	EX-100W STA3	EX-150W STA3	EX-200W STA3
Rated Wattage(W):	250	100	150	200	100	150	200
Efficiency:	120-140 lm/W						
Dimension(mm):	264x414x73	277x434x84			330x551x71		
Voltage Option:	AC 100-305/180-525V						
CCT:	2,700-7,000K						
Beam Angle(Deg):	Type III 10-120 Degree						
CRI:	>70						
Control:	0-10V						
Working Temperature:	-40°C to +65°C						
Protection Class:	IP66						
Mounting:	Wall Mounting, Pole Mounting						
Compliance:	UL844/ATEX/IECEX/CB						
Rating:	Class I , Division 2; Class II , Division 1; Class II , Division 2;ClassIII; Zone 1&2, Zone 21&22						

► **STA4 Series**

STA4 Series is a LED flood light rated for hazardous and wet locations. Die-cast aluminum housing and toughened glass lampshade. Degree of protection: IP66.



Model:	EX-xxxW-STA4-A	EX-xxxW-STA4-B	EX-xxxW-STA4-C
Rated Wattage(W):	35	70	140
Efficiency:	140 lm/W		
Dimension(mm):	239x173x129	300x195x157	391x327x165
Voltage Option:	AC200-277V, 50/60Hz		
CCT:	2,200-6,500K		
CRI:	>70		
Working Temperature:	-40°C to +65°C		
Emergency Time	>1.5Hrs		
Compliance:	IECEX/ATEX/CB		
Rating:	Zone 1 & 2, Zone 21 & 22		



HAZARDOUS LOCATION LUMINAIRES

▶ **EX-A5/A6  
Series Explosion-proof Luminaire**

Wide and narrow optics for uniform illumination. Copper free aluminaire body and corrosion resistant frame. Up to 50,000 hours LED service life.



Model:	A5	A6
Rated Wattage(W):	50/60/70/80/100/120/135/150/180/200/240	50/60/70/80/100/120
Voltage:	AC110-277V/AC120-277V/AC220-240V	
Dimension(mm):	460x546x81	391x424x71
CRI:	>70	
CCT:	2,200-7,000K	
Beam Angle(Deg):	30/60/90/120/T2-M/T3-M/T4-M	
Operating Temperature:	-40°C to +65°C	
Protecting Degree:	IP66	
Compliance:	Zone 1/Zone 2/ATEX/CB	

▶ **EX-A7/A8  
Series Explosion-proof Luminaire**

Wide and narrow optics for uniform illumination. Copper free aluminaire body and corrosion resistant frame. Up to 50,000 hours LED service life.



Model:	A7	A8
Rated Wattage(W):	100/120/140/160/200/240/270/300/360/400/480	100/120/140/160/200/240
Voltage:	AC110-277V/AC120-277V/AC220-240V	
Dimension(mm):	874x419x81	675x350x71
CRI:	>70	
CCT:	2,200-7,000K	
Beam Angle(Deg):	30/60/90/120/T2-M/T3-M/T4-M	
Operating Temperature:	-40°C to +65°C	
Protecting Degree:	IP66	
Compliance:	Zone 1/Zone 2/ATEX/CB	

HAZARDOUS LOCATION LUMINAIRES

▶ **EX-A9/A10  
Series Explosion-proof Luminaire**

Wide and narrow optics for uniform illumination. Copper free aluminaire body and corrosion resistant frame. Up to 50,000 hours LED service life.



Model:	A9	A10
Rated Wattage(W):	50/60/70/80/100/120/135/150/180/200/240	50/60/70/80/100/120
Voltage:	AC110-277V/AC120-277V/AC220-240V	
Dimension(mm):	460x320x81	388x249x71
CRI:	>70	
CCT:	2,200-7,000K	
Beam Angle(Deg):	30/60/90/120/T2-M/T3-M/T4-M	
Operating Temperature:	-40°C to +65°C	
Protecting Degree:	IP66	
Compliance:	Zone 1/Zone 2/ATEX/CB	

▶ **CPA Series  
Explosion Proof Canopy Light**

Efficiency up to 140 lumen per watt. Slim and compact design. Applicable to oil and gas, chemical, metal treatment, food and alcohol industry.



Model:	EX-40W CPAYZ	EX-60W CPAYZ	EX-80W CPAYZ	EX-150W CPAYZ
Rated Wattage(W):	40	60	80	150
Rated Lumen(Lm):	5,600	8,400	11,200	21,000
Dimension(mm):	460x470x310			
Voltage Option:	AC100-277V/DC36V			
CCT:	2,200-7,000K			
CRI:	>70			
Housing:	Copper free aluminum			
Lens:	Glass			
Protection Class:	IP66			
Compliance:	ATEX/IECEX			
Rating:	Zone 2, Zone 21&22			

## HAZARDOUS LOCATION LUMINAIRES

**▶ ES01 Series**

Suitable for wall, ceiling or pendant mounting. Can be fitted to order with emergency exit signs. Central locking. Low working wattage for energy saving. 15w version available, switchable to ordinary illumination. Up to 5 years limited warranty option. Emergency time at least 180 minutes. Up to 50,000 hours lifespan.



Model:	EX-1W EYZDA	EX-2W EYZDA	EX-3W EYZDA	EX-15W EYZDA
Rated Wattage(W):	1	2	3	15
Voltage Option:	AC100-277V; AC/DC12-36V			
Dimension(mm):	475x198x96(LxHxW)			
CCT:	2,200-7,000K(EX-15W EYZDA)			
Protection Class:	IP66			
Mounting:	Wall Mounting, Ceiling Mounting, Pendant Mounting			
Compliance:	IECEX/CB/ATEX/API Spec Q1			
Rating:	Zone 1 & 2, Zone 21 & 22			

**▶ ES02 Series**

High durability and reliability. High leakproofness up to IP66. Low working wattage for energy saving. 3/4" NPT or M25 conduit hubs. Edge-lit sign. Can be used outdoors. Emergency time at least 180 minutes. Up to 50,000 hours lifespan.



Model:	EX-5W ES02 A1/A2N50	EX-10W ES02 A1/A2N50	EX-1×8W ES02 A1/A2N40	EX-15W ES02 A1/A2N40	EX-20W ES02 A1/A2N40	EX-2×8W ES02 A1/A2N40	EX-3×8W ES02 A1/A2N40
Wattage(W):	5	10	8	15	20	16	24
Rated Lumen(Lm):	650	1300	1040	1950	2600	2080	3120
Dimension(mm):	385x188x136(small housing)			443x267x162(big housing)			
Voltage:	AC100-277V, or DC 12-48V						
Lifespan:	Up to 50,000 Hours						
Protection Class:	IP66						
Mounting:	Wall Mounting with Bracket, Ceiling Mounting with Arm						
Compliance:	IECEX/CB/ATEX/API Spec Q1						
Rating:	Zone 1 & 2, Zone 21 & 22						

## HAZARDOUS LOCATION LUMINAIRES

**▶ ES02 Series**

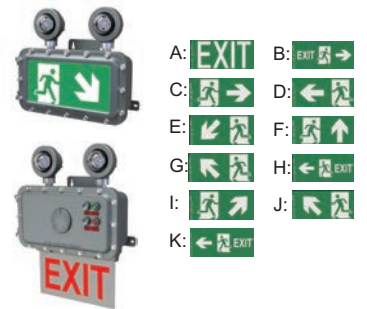
High durability and reliability. High leakproofness up to IP66. Low working wattage for energy saving. 3/4" NPT or M25 conduit hubs. Edge-lit sign. Can be used outdoors. Emergency time at least 180 minutes. Up to 50,000 hours lifespan.



Model:	EX-XXW ES02B1
Wattage(W):	7-20
Rated Lumen(Lm):	910-2600
Dimension(mm):	442x381x174
Voltage:	AC100-277V
Lifespan:	Up to 50,000 Hours
Protection Class:	IP66
Mounting:	Wall Mounting with Bracket, Ceiling Mounting with Arm
Compliance:	IECEx/CB/ATEX/API Spec Q1
Rating:	Zone 1 & 2, Zone 21 & 22

**▶ ES02 Series**

High durability and reliability. High leakproofness up to IP66. Low working wattage for energy saving. 3/4" NPT or M25 conduit hubs. Edge-lit sign. Can be used outdoors. Emergency time at least 180 minutes. Up to 50,000 hours lifespan.



Model:	EX-5W ES02B2A/B/C/D/E/F/G/H/I/J/K	EX-5W ES02B3A/B/C/D/E/F/G/H/I/J/K
Wattage(W):	5	5
Rated Lumen(Lm):	650	650
Dimension(mm):	443x267x162	443x468x175
Voltage:	AC100-277V, or DC 12-48V	
Lifespan:	Up to 50,000 Hours	
Protection Class:	IP66	
Mounting:	Wall Mounting with Bracket, Ceiling Mounting with Arm	
Compliance:	IECEX/CB/ATEX/API Spec Q1	
Rating:	Zone 1 & 2, Zone 21 & 22	



HAZARDOUS LOCATION LUMINAIRES

► ES02 Series

High durability and reliability. High leakproofness up to IP66.  
Low working wattage for energy saving. 3/4" NPT or M25  
conduit hubs. Edge-lit sign. Can be used outdoors. Emergency  
time at least 180 minutes. Up to 50,000 hours lifespan.



Model:	EX-5W ES02B4A/B/C/D/E/F/G/H/I/J/K	EX-5W ES02B3A/B/C/D/E/F/G/H/I/J/K
Wattage(W):	Head Light: 15W Max. Exit Sign: 5W Max.	Head Light: 15W Max. Exit Sign: 5W Max.
Dimension(mm):	443x380x162	443x582x175
Voltage:	AC100-277V, or DC 12-48V	
Lifespan:	Up to 50,000 Hours	
Protection Class:	IP66	
Mounting:	Wall Mounting with Bracket, Ceiling Mounting with Arm	
Compliance:	IECEX/CB/ATEX/API Spec Q1	
Rating:	Zone 1 & 2, Zone 21 & 22	

► ES02 Series

AC100-277V  
(by driver and by IC)

High durability and reliability. High leakproofness up to IP66.  
Low working wattage for energy saving. 3/4" NPT or M25  
conduit hubs. Edge-lit sign. Can be used outdoors. Emergency  
time at least 180 minutes. Up to 50,000 hours lifespan.



Model:	EX-3W ES02C	EX-5W ES02C	EX-10W ES02C	EX-3W ES02D	EX-5W ES02D	EX-10W ES02D
Wattage(W):	3	5	10	3	5	10
Emergency Time:	180 mins					
Dimension(mm):	280x305x165			280x333x226		
Voltage:	AC100-277V, or DC 12-48V					
Lifespan:	Up to 50,000 Hours					
Protection Class:	IP66					
Mounting:	Wall Mounting with Bracket, Ceiling Mounting with Arm					
Compliance:	IECEX/CB/ATEX/API Spec Q1					
Rating:	Zone 1 & 2, Zone 21 & 22					

HAZARDOUS LOCATION LUMINAIRES

► ES02 Series

High durability and reliability. High leakproofness up to IP66.  
Low working wattage for energy saving. 3/4" NPT or M25  
conduit hubs. Edge-lit sign. Can be used outdoors. Emergency  
time at least 180 minutes. Up to 50,000 hours lifespan.



Model:	EX-ES02C2	EX-ES02C3
Product Type:	Junction box	Battery Box
Cable Cross Section:	2.5mm² 24A; 4.0mm² 32A; 6.0mm² 41A; 10mm² 57A; 16mm² 76A; 35mm² 125A; 70mm² 192A; 240mm² 400A	
Dimension(mm):	385x188x136(small housing), 443x267x162(big housing)	
Voltage:	Max.AC800V	
Lifespan:	Up to 50,000 Hours	
Protection Class:	IP66	
Mounting:	Wall Mounting with Bracket, Ceiling Mounting with Arm	
Compliance:	IECEX/CB/ATEX/API Spec Q1	
Rating:	Zone 1 & 2, Zone 21 & 22	

► V Series

Fully electrical circuit control. Outdoor use  
and resistant to saltwater. Effective panel  
illumination and visible through smoke or  
obstruction. The latest LED technology  
contributes to the high efficiency of this  
emergency lighting products.



Model:	EX-1W VYZDA	EX-2W VYZDA	EX-3W VYZDA
Rated Wattage(W):	1	2	3
Voltage Option:	AC: 100-277V; AC/DC: 12-48V		
Dimension(mm):	409x281x46		
Emergency(optional):	3 Hours		
CCT:	2,200-7,000K		
Mounting:	Pendant Mounting		
IP:	66		
Rating:	Class I, Division 2; Class II, Division 1; Class II, Division 2; Class III; Zone 2, Zone 21 & 22		
Compliance:	UL844/UL1598/UL1598A/IECEX/ATEX/CB /CSA/ETL		

HAZARDOUS LOCATION LUMINAIRES

► L Series

The hazardous location L series is rated and certified for use in all types of hazardous application. The L series is a hand-held work site luminaire for task or general illumination in small and confined spaces.



Model:	EX-5W LXYZDA	EX-10W LXYZDA	EX-20W LXYZDA	EX-30W LXYZDA	EX-5W LLXYZDA	EX-10W LLXYZDA	EX-20W LLXYZDA	EX-30W LLXYZDA
Rated Wattage(W):	5	10	20	30	5	10	20	30
Rated Lumen(Lm):	500	1000	2000	3000	500	1000	2000	3000
Dimension(mm):	H523xØ130							
Voltage Option:	AC 100-277V/200-480V							
CCT:	2,200-7,000K							
Protection Class:	IP67							
Mounting:	Hand Grip/Integrated Hanger Hook							
Compliance:	UL 1598A/UL 1598UL844/API Spec Q1/IECEX/ATEX/CB							
Rating:	Class I , Division 1; Class I , Division 2; Class II, Division 1; Class II, Division 2; Class III; Zone 1&2, Zone 21&22							

► WKC Series

Safe and reliable. Strong impact resistance. Environmental friendly. Easily switch between different modes. Handy, portable and magnet adsorption. Protection class: IP65.



Model:	EX-xxxW-WKC1YZDA	EX-xxxW-WKC2YZDA
Rated Wattage(W):	10	
Rated Lumen(Lm):	1,000	1,170
Dimension(mm):	129x129x231	282x178x124
Voltage:	100-240V	
CCT:	2,200-7,000K	
CRI:	>70	
Compliance:	ATEX/IECEX/CB/API Spec Q1	
Rating:	Zone 2, Zone 21 & 22	

HAZARDOUS LOCATION LUMINAIRES

► WKE Series

ATEX and IECEx certified. Approved for explosive Gas and Dust atmospheres. Ultra bright high power LED light 350+ lumens. Spot and flood switchable beam options. Up to 11 hours duration on full power, 22 hours in signal light mode. T4 temperature class.



Model:	EX-002W-WKE-RY	EX-002W-WKE-RG
Rated Wattage(W):	2	
Ambient Temperature:	-20°C to +40°C	
Housing Material:	Impact Resistant Thermoplastic, Electrostatic Non-hazardous	
Light Source Output:	>350Lm(White)	
Light Source Life:	>25,000 H	
Power Source Type:	Rechargeable Battery, Lithium-Ion	
Power Source Life:	Up to 500 Recharge Cycles	
Light Duration:	Up to 11/22 Hrs	
Recharge Time:	4.5H	
Compatible Charger:	AC 90-264V	
IP:	66	
Compliance:	UL844/ATEX/IECEX/CB	
Rating:	Class I, Division 1 & 2; Class II, Division 1; Class II, Division 2; Class III; Zone 0, 1 & 2, Zone 20, 21 & 22	

► WKG Series

ATEX and IECEx certified. T4 temperature class. Proven impact resistance. Single handed switching. Switch protection shroud.



Model:	EX-002W-WKG
Rated Wattage(W):	2
Rated Lumen(Lm):	210
Dimension(mm):	173x46(LxW)
Ambient Temperature:	-40°C to 40°C
All Sealing Gasket:	COT: -40°C to 200°C
Compliance:	Group I Mining Approval
Rating:	Zone 0, 1 & 2, Zone 21 & 22



HAZARDOUS LOCATION LUMINAIRES & MOTION SENSOR

►Ex-MV01 Series

ATEX and IECEx certified. Plastic body and frame-corrosion resistant. Easy for angle adjustment. Portable working and emergency light. High luminous efficacy-Up to 1600 Lm. Valid over the entire temperature range from -20°C to 40°C (-4 °F to 104°F).



Model:	Ex-19.5W-MV01
Rated Wattage:	Max 19.5W
Rated Lumens(Lm):	Max 1,600
Dimension(mm):	355x206(LxW)
Deployable Height :	Min.22.3, Max.31.5, or Min.25.0, Max.35.8
Voltage:	10.8V(Battery); AC100V/277V(Charger)
CCT:	30:3,000K, 40:4,000K, 50:5,000K, 65:6,500K
Beam Angle(Deg):	125
Working Time:	10H(Max.)
Charging Voltage:	DC 10.8-14.4V
Battery Capacity:	10.8V, 9Ah
Compliance:	UL844/UL1598/ATEX/IECEX/CSA/CB
Rating:	Class1, Division I ,Group A, B, C, D; Zone 0,1&2

►EX-IN01-B-MS/OS/MO Series

ATEX and IECEx certified. Copper-free aluminum body, plastic-sprayed surface.Compact and small housing, can be fixed inside most luminaires. An innovative and active motion detector with 5.8GHz HF system. Wide detection area, up to 16m in diameter. Automatic switch on/off based on motion and ambient light level.



Model:	EX-IN01-B MS/OS/MO
Power Consumption:	≤0.5W(standby)
Rated Load:	120V@400W;220-240V@800W;277V@1,000W
HF System:	5.8GHz±75MHz, ISM wave band
Rated Voltage:	120~277VAC, 50Hz
Detection Zone:	Max. (D x H): 16m x 15m
Detection Sensitivity:	25%/50%/75%/100%
Hold Time:	5s/30s/90s/3min/20min/30min
Protecting Degree:	IP66-IP67
Motion Detection:	0.5~3m/s
Detection Angle:	150° (wall installation), 360° (ceiling installation)
Daylight Sensor:	5Lux/15Lux/30Lux/50Lux/100Lux/Disable
Standards:	UL/IECEX/ATEX/CB
Rating:	Class I, Division 1 & 2; Class II, Division 1; Class II, Division 2; Class III/Zone 1 & 2, Zone 21& 22

►Ex-HD51 Series

For general wiring in hazardous locations. Copper free aluminum enclosure. Ex d type flameproof enclosure. Four types of enclosures available. Degree of protection: IP66/IP67.



Model:	Ex-HD51-A Ex-HD51-B Ex-HD51-C Ex-HD51-KB1 Ex-HD51-D Ex-HD51-E Ex-HD51-F Ex-HD51-KYD
Rated Voltage:	Max.800VAC
Rated Current:	24A, 32A, 41A
Ambient Temperature:	-60°C to + 60°C
Terminal:	Type A, D: 2.5mm <sup>2</sup> , 4mm <sup>2</sup> , Max. 4 sections; Type B, E: 2.5mm <sup>2</sup> , 4mm <sup>2</sup> , (Max. 6 sections); Type C, F: 2.5mm <sup>2</sup> (Max. 12 scetions), 4mm <sup>2</sup> ( Max. 10 sections), 6mm <sup>2</sup> (Max. 8 sections); Type KB1, KYD: 2.5mm <sup>2</sup> , Max. 3 sections.
Cross Sectional Area of Terminal Cables:	Type A, B, C, D, E, F : 0.2-4mm <sup>2</sup> ; Type F, C: 0.2-6mm <sup>2</sup> ; Type KB1, KYD: 0.2-2.5mm <sup>2</sup> .
Cable Entry:	Type A, B, C, D, E, F, KB1, KYD: M20×1.5. Type A, B, C, D, E, F, KB1, KYD: M25×1.5. Type C, E, F: M32×1.5. Type E, F: M40×1.5. Type F: M50×1.5. Type F: M63×1.5.
Type of Flameproof Joint:	Type A, B, C, D, E, F: Threaded joints; Type KB1: Flanged and threaded joints
Compliance:	UL1203
Rating:	Class I, Division 1 & 2; Class II, Division 1; Class II, Division 2; Class III/Zone 1 & 2, Zone 21& 22

►Ex-IN01 Series

More than 30 kinds of plug-and-play smart sensors are available, such as volatile organic compounds VOC, toxic and harmful electrochemical sensors and oxygen, catalytic combustion sensors and infrared sensor, flexible configuration of any combination of sensors



Model:	EX-IN01-A/B/C/D-CGD/TGD/VOC; EX-IN01-A/B/C/D-SCGD/STGD/SVOC;
Housing Material:	Marine grade copper free aluminum light alloy
Ambient Temperature:	-60°C to 70°C (T6) or -60°C to 85°C (T5); -76°F to 158°F (T6) or -76°Fto 185°F (T5)
Finish:	Surface electrostatic powder spraying treatment
Rated Voltage:	DC 24V
Detection Range:	0-1, 2, 5, 10, 50, 100, 500, 1000, 5000, 10000, 50000 (depending on the sensor and technical principle)
Accuracy:	≤± 3% (different for individual gases)
Response Time:	≤ 3-20s (different for individual gases)
Protecting Degree:	IP66-IP67
Technical Principle:	Electrochemistry, infrared ray, catalytic combustion, PID, semiconductor, optical waveguide, etc
Repeatability:	≤± 1%
Linear Error:	≤± 1%
Standards:	UL/IECEX/ATEX/CSA
Rating:	Class I, Division1; Class II, Division 1; Class II, Division2; Class III/Zone 1 &2, Zone 21 &22

MOTION SENSOR&JUNCTION BOX

► EX-IN02-MS/OS/MO Series

Copper-free aluminum body, plastic-sprayed surface . Compact and small housing, can be fixed inside most luminares. 2-step or 3 step dimming with 1-10V dimmable led driver. Automatic switch on/off based on motion and ambient light level.



Model:	EX-IN02-MS/OS/MO
Rated Voltage:	AC120-277V; AC120-347V; 50/60Hz
Standby Power:	≤1.0W
Hold Time:	5s/30s/90s/3min/20min/+∞
Stand-by Dim Level:	10%/20%/30%/50%
Detection Area:	25%/50%/75%/100%/
Daylight Sensor:	2 lux/5Lux/10Lux/25Lux/50Lux/100Lux/Disable
Detecting Angle:	150°(Wall mounting); 360°(Ceiling mounting)
Operating Temperature:	-30°C~60°C(-22°F~140°F)
IP:	IP65
Rating:	Class I, Division2/Zone 2, Zone 22

► Ex-HD51 Series

For general wiring in hazardous locations. Copper free aluminum enclosure. Ex d type flameproof enclosure. Four types of enclosures available. Degree of protection: IP66/IP67.



Model:	Ex-HD51-A	Ex-HD51-B	Ex-HD51-C	Ex-HD51-KB1
Rated Voltage:	Max.800VAC			
Rated Current:	24A, 32A, 41A			
Ambient Temperature:	-60°C to + 55°C			
Terminal:	Type A, B, KB1: 2.5mm <sup>2</sup> , 4mm <sup>2</sup> , Max. 6 sections; Type C: 2.5mm <sup>2</sup> , Max. 12 sections; 4mm <sup>2</sup> , Max. 10 sections; 6mm <sup>2</sup> , Max. 8 sections.			
Cross Sectional Area of Terminal Cables:	Type A, B, KB1: 0.2-4mm <sup>2</sup> ; Type C: 0.2-6mm <sup>2</sup> .			
Cable Entry:	Type A, B, KB1: (M20, M25)×1.5 stopping plug Type C: (M20, M25, M32)×1.5 stopping plug; NPT 1/2", NPT3/4", NPT1" stopping plugs			
Type of Flameproof Joint:	Type A, B, C: Threaded joints; Type KB1: Flanged and threaded joints			
Compliance:	ATEX/IECEX/CB			
Standards:	EN 60079-0, EN 60079-1,EN 60079-31, IEC 60079-0, IEC 60079-1, IEC 60079-31			
Rating:	Zone 1 & 2, Zone 21& 22			

CONTROL UNIT SYSTEM & DISTRIBUTION EQUIPMENT

► Control Unit Systems

Copper free aluminum, plastic-sprayed surface. Ex d enclosure. Cable entry customizable. Degree of protection: IP66. Dual and tripartite systems able to install different collocation(such as pushbutton, switch, indicator,ammeter and voltmeter).



Model:	EX-ZA65
Rated Voltage:	Max.800V AC
Rated Current:	Max.10A(AC), 6A(DC); 25A(AC)
Ambient Temperature:	-60°C to +60°C
Cable Entry:	2 ×M25×1.5 stopping plug or 2×NPT3/4"
Cable Entry Device:	Optional
Type of Flameproof Joint:	Cylindrical Joint, Threaded Joint
Built-in Components:	EX-HA pushbutton, EX-D indicator, Switches, Ammeter/Voltmeter
Compliance:	UL/ATEX/IECEX
Standard:	EN IEC 60079-0, EN IEC 60079-1,EN IEC 60079-31
Rating:	Zone 1 & 2, Zone 21& 22

► Ex-PD61 Series

Copper free aluminum, plastic-sprayed surface. Ex d type flameproof enclosure. Can be used as terminal box, distribution box and control box. Degree of protection: IP66. Compliance: UL/ATEX /IECEX. Rating: Zone 1 & 2, Zone 21& 22.



Model:	Ex-PD61
Rated Voltage:	Max.100V AC, 50/60Hz
Rated Current:	Max.1,200A
Ambient Temperature:	-60°C to + 60°C
Cable Entry:	Standard M□×1.5 Plug
Cable Entry Device:	Optional
Entry Direction:	Bottom
Installation Type:	Wall Mounting(Standard); Bracket Mounting(Optional)
Type of Flameproof Joint:	Cylindrical Joint, Threaded Joint, Plane Joint
Built-in Components:	Main switch: miniature circuit breaker(MCB) or molded case circuit breaker (MCCB) (Noted: earth leakage protection on request); Branch switch: miniature circuit breaker(MCB) or molded case circuit breaker (MCCB) (Noted: earth leakage protection on request); Terminal; Indicator light EX-D: Red, green, yellow, blue; Button EX-A: Red, green, yellow; AC contactor; Thermal overload relay; PLC programmer; Soft starter; Control switch EX-K; Ammeter/Voltmeter
Standard:	EN IEC 60079-0, EN IEC 60079-1,EN IEC 60079-31



DISTRIBUTION EQUIPMENT

► PD61 Series

Copper free aluminum, plastic-sprayed surface.  
Ex d type flameproof enclosure. Can be used as terminal box, distribution box and control box.



Model:	EX-PD61
Voltage Option:	Max. 1000V AC, 50/60Hz
Rated Current:	Max. 1,200A
Entry Direction:	Bottom
Cable Entry Device:	Optional
Type of Flameproof Joint:	Cylindrical Joint, Threaded Joint, PlaneJoint
Ambient Temperature	-60°C to +60°C
Protection Class:	IP66
Installation Type:	Wall Mounting (Standard); Bracket Mounting (Optional)
Certificates:	IECEEx, ATEX
Standard:	EN 60079-0, EN 60079-1,EN 60079-31, IEC 60079-0, IEC 60079-1, IEC 60079-31
Rating:	Zone 1&2, Zone 21&22

► Ex-PD61-JX-IIB Series

Copper free aluminum, plastic-sprayed surface.  
Ex d type flameproof enclosure. Degree of protection: IP67-IP67. Rating: Zone 1 & 2, Zone 21 & 22.



Model:	Ex-PD61-JX-IIB								
Rated Voltage:	Max.800V								
Rated Current:	Cable Cross Section(mm²)	2.5	4	6	10	16	35	70	240
	Rated Current(A)	24	32	41	57	76	125	192	400
Terminal:	Phoenix or Weidmuller								
Ambient Temperature:	-60°C to + 60°C								
Type of Flameproof Joint:	Plane Joint								
Compliance:	UL/ATEX/IECEEx								
Standard:	EN IEC 60079-0, EN IEC 60079-1,EN IEC 60079-31								

DISTRIBUTION EQUIPMENT

► Ex-PD61-ZM Series

Copper free aluminum, stainless steel.  
Plastic-sprayed surface. Earth leakage protection device is optional. Degree of protection: IP66-IP67. Rating: Zone 1 & 2, Zone 21& 22.



Model:	Ex-PD61-ZM
Rated Voltage:	Max.690V AC, 50/60Hz
Rated Current:	Max.100A
Branch Current:	1A, 2A, 4A, 6A, 10A, 16A, 20A, 25A, 32A
Ambient Temperature:	-60°C to + 55°C
Cable Entry:	Standard M□×1.5 Plug
Cable Entry Device:	Optional
Entry Direction:	Bottom( in and out)
Installation Type:	Wall Mounting(Standard); Bracket Mounting(Optional)
Type of Flameproof Joint:	Cylindrical Joint, Threaded Joint, Plane Joint
Built-in Components:	Main switch: miniature circuit breaker(MCB) or molded case circuit breaker (MCCB) (Noted: earth leakage protection on request); Branch switch: miniature circuit breaker(MCB) or molded case circuit breaker (MCCB) (Noted: earth leakage protection on request); Terminal; Indicator: Red, green, yellow
Compliance:	UL/IECEEx/ATEX
Standard:	EN IEC 60079-0, EN IEC 60079-1,EN IEC 60079-31

► Ex-PD61-DL Series

Copper free aluminum, stainless steel. Plastic-sprayed surface.  
Earth leakage protection device is optional. Degree of protection: IP66-IP67. Compliance: UL/IECEEx/ATEX. Standard: EN IEC 60079-0, EN IEC 60079-1, EN IEC 60079-31. Rating: Zone 1 & 2, Zone 21 & 22.



Model:	Ex-PD61-DL
Total Power Supply:	Max.690V AC, 50/60Hz
Rated Voltage:	AC 380V/400V, 50/60Hz
Rated Current:	Max.630A
Branch Current:	1A, 2A, 4A, 6A, 10A, 16A, 20A, 25A, 32A, 40A, 50A, 63A, 80A, 100A, 125A, 160A, 200A, 250A, 320A, 400A
Cable Entry:	Standard M□×1.5 Plug
Ambient Temperature:	-60°C to + 55°C
Cable Entry Device:	Optional
Entry Direction:	Bottom( in and out)
Installation Type:	Wall Mounting(Standard); Bracket Mounting(Optional)
Type of Flameproof Joint:	Cylindrical Joint, Threaded Joint, Plane Joint
Built-in Components:	Main switch: miniature circuit breaker(MCB) or molded case circuit breaker (MCCB) (Noted: earth leakage protection on request); Branch switch: miniature circuit breaker(MCB) or molded case circuit breaker (MCCB) (Noted: earth leakage protection on request); Terminal; Indicator: Red, green, yellow

DISTRIBUTION EQUIPMENT

►Ex-PD61-ZC Series

Copper free aluminum, plastic-sprayed surface.  
Ex d type flameproof enclosure. Degree of protection: IP66-IP67. Rating: Zone 1 & 2, Zone 21& 22.



Model:	Ex-PD61-ZC
Rated Voltage:	Max.415V AC
Rated Current:	10A
Ambient Temperature:	-60°C to + 60°C
Cable Entry:	Standard M□×1.5 Plug
Cable Entry Device:	Standard M□×1.5
Entry Direction:	Bottom
Built-in Components:	EX-A Pushbutton, EX-D Indicator, EX-K Control Switch, Explosion-proof Ammeter/Voltmeter
Installation Type:	Wall Mounting
Type of Flameproof Joint:	Cylindrical Joint, Threaded Joint, Plane Joint
Compliance:	UL/ATEX/IECEX
Standard:	EN IEC 60079-0, EN IEC 60079-1,EN IEC 60079-31

►Ex-PD61-QD Series

Copper free aluminum, plastic-sprayed surface.  
Degree of protection: IP66-IP67. Rating: Zone 1 & 2, Zone 21& 22.



Model:	Ex-PD61-QD
Rated Voltage:	380/400V AC, 50/60Hz
Cable Entry:	Standard M□×1.5 Plug
Cable Entry Device:	Optional
Entry Direction:	Bottom( in and out)
Type of Flameproof Joint:	Cylindrical Joint, Threaded Joint, Plane Joint
Built-in Components:	Miniature circuit breaker(MCB) or moulded case circuit breaker( MCCB) AC contactor, thermal overload relay, indicator, button
Ambient Temperature:	T6/T80°C for Tamb: -60°C to +50°C; T5/T90°C for Tamb: -60°C to +60°C
Compliance:	UL/ATEX/IECEX
Standard:	EN IEC 60079-0, EN IEC 60079-1,EN IEC 60079-31

DISTRIBUTION EQUIPMENT

►Ex-PD61-LK Series

Copper free aluminum, plastic-sprayed surface. Earth leakage protection device is optional. Degree of protection: IP66-IP67. Compliance: UL/ATEX/IECEX. Standard: EN IEC 60079-0, EN IEC 60079-1,EN IEC 60079-31. Ambient Temperature: -60°C to + 60°C. Rating: Zone 1 & 2, Zone 21& 22.



Model:	Ex-PD61-LK-63/□/□/□	Ex-PD61-LK-160/□/□/□	Ex-PD61-LK-250/□/□/□
Circuit Breaker:	Miniature Circuit Breaker (MCB)	Moulded Case Circuit Breaker(MCCB)	Moulded Case Circuit Breaker(MCCB)
Max. Working Voltage:	440V AC, 50/60Hz	690V AC, 50/60Hz, 500V DC	690V AC, 50/60Hz, 500V DC
Rated Voltage:	1P/230V AC, 2P/3P/4P/400V AC, 50/60Hz	-	-
Rated Current:	1/2/4/6/10/16/20/25/32/40/50/63A	Max.160A	Max.250A
Number of Pole:	1P,2P,3P,4P	3P,4P	3P,4P
Breaking Capacity :	6kA, 10kA, 15kA	380/415V AC 50/60Hz, 36kA/50kA 440V AC 50/60Hz, 30kA/45kA	380/415V AC 50/60Hz, 36kA/50kA 440V AC 50/60Hz, 25kA/40kA
Impulse Withstand Voltage:	6kV	8kV	8kV
Tripping Characteristic:	Instantaneous Tripping Range(5-10) In or(7-10) In or(10-14) In	Thermomagnetic Type	Thermomagnetic Type
Cable Entry:	Standard 1-16A: 2×M25×1.5 Plugs 2-32A: 2×M32×1.5 Plugs 40-63A: 2×M40×1.5 Plugs	80-100A: 2×M50×1.5 Plugs 125-160A: 2×M63×1.5 Plugs	2×M63×1.5 Plugs
Type of Flameproof Joint:	Cylindrical Joint, Plane Joint		

►PD62 Series

IECEX and ATEX certified. Stainless steel enclosure.  
Various dimensions to meet different requirements.



Model:	EX-PD62-X-X
Voltage Option:	Max. 500V AC
Internal & External Earthing:	M6/M6
Rated Current:	Ex e: 24A(2.5mm²); 32A(4mm²); 41A(6mm²); 57A(10mm²); 76A(16mm²); 125A(35mm²); 192A(70mm²); 269A(120mm²); 353A(185mm²); 415A(240mm²); Ex ia: 5A(2.5mm²); 5A(4mm²)
Enclosure Material:	Stainless steel
Ambient Temperature	Ex e: T6/T80°C for Tamb: -40°C to +40°C; T5/T95°C for Tamb: -40°C to +55°C Ex ia: T6/T80°C for Tamb: -40°C to +55°C
Protection Class:	IP66/IP67 (optional)
Certificates:	IECEX, ATEX
Standard:	EN 60079-0, EN 60079-7, EN 60079-11, EN 60079-31; IEC 60079-0, IEC 60079-7, IEC 60079-11, IEC 60079-31; UL 121201, UL 508, UL 50, UL 50E, UL 508A; CSA C22.2 No.213, CSA C22.2 No.14, CSA C22.2 No.94.1, CSA C22.2 No.94.2
Rating:	Zone 0&1&2, Zone 21&22; Class I, Zone 1 & 2; Class I, Division 2, Groups A, B, C, D



DISTRIBUTION EQUIPMENT

► PD63 Series

GRP (glass fibre-reinforced polyester resin) enclosure, stainless steel exposed fastener. Various dimensions to meet different requirements.



Model:	EX-PD63-X-X
Rated Voltage:	Max. 690V
Rated Current:	Ex e: 24A(2.5mm²); 32A(4mm²); 41A(6mm²); 76A(16mm²); 125A(35mm²) Ex ia: 5A(2.5mm²); 5A(4mm²); 5A(6mm²)
Enclosure Material:	GRP (glass fibre-reinforced polyester resin)
Terminal:	International brand of explosion-proof terminal blocks
Exposed fastener:	Stainless steel
Protection Class:	IP66/IP67 (optional)
Ambient Temperature:	Ex e: T6 for Tamb: -40°C to +40°C; T5 for Tamb: -40°C to +55°C Ex ia: T6 for Tamb: -40°C to +55°C
Certificates:	IECEX, ATEX
Standard:	EN 60079-0, EN 60079-7, EN 60079-11, EN 60079-31 IEC 60079-0, IEC 60079-7, IEC 60079-11, IEC 60079-31
Rating:	Class I, Zone 1 & 2; Class I, Division 2, Groups A, B, C, D; Zone 0 & 1 & 2; Zone 21 & 22

► PD65 Series

GRP (glass fibre-reinforced polyester resin) enclosure, stainless steel exposed fastener. ATEX & IECEX approved. Various dimensions to meet different requirements.



Model:	EX-PD65-X-X
Rated Voltage:	Max. 800V
Rated Current:	Ex e: 24A(2.5mm²); 32A(4mm²); 41A(6mm²); 57A(10mm²); 76A(16mm²); 125A(35mm²) Ex ia: 5A(2.5mm²); 5A(4mm²); 5A(6mm²)
Enclosure Material:	GRP (glass fibre-reinforced polyester resin)
Terminal:	International brand of explosion-proof terminal blocks
Exposed fastener:	Stainless steel
Protection Class:	IP66/IP67 (optional)
Ambient Temperature:	Ex e: T6 for Tamb: -40°C to +40°C; T5 for Tamb: -40°C to +55°C Ex ia: T6 for Tamb: -40°C to +55°C
Certificates:	IECEX, ATEX
Standard:	EN 60079-0, EN 60079-7, EN 60079-11, EN 60079-31 IEC 60079-0, IEC 60079-7, IEC 60079-11, IEC 60079-31
Rating:	Class I, Zone 1 & 2; Class I, Division 2, Groups A, B, C, D; Zone 0 & 1 & 2; Zone 21 & 22

ENCLOSURE & CABLE GLAND

► Enclosure for Lighting Control Switch (Motion Sensor)

Copper-free aluminum body, plastic-sprayed surface . Compact and small housing, can be fixed inside most luminaires.



Body Material:	Copper-free aluminum
Surface:	Plastic-sprayed
Operating Temperature:	-30°C~60°C(-22°F~140°F)
IP:	IP66/IP67
Rating:	Class I, Division 1 & 2; Class II, Division 1; Class II, Division 2; Class III Zone 1 & 2, Zone 21 & 22

► Ex-QM01-A1 Series

Ex e, structure. Single seal, suitable for unarmored cable. Degree of protection: IP66/IP68.



Model:	Ex-QM01-A1
Marking ATEX:	II2 GD Ex eb IIC Gb Ex tb IIIC Db IP66/IP68
Marking IECEX:	Ex eb IIC Gb Ex tb IIIC Db IP66/IP68
Ambient Temperature:	-50°C≤Tamb≤+80°C
Connection Thread:	Metric Thread, NPT Thread
Standard:	IEC60079-0:2017, IEC60079-1:2014, IEC60079-7:2017, IEC60079-31:2013, EN60079-0:2012+A11:2013, EN60079-1:2014, EN60079-7:2015, N60079-31:2014
Rating:	Zone 1 & 2, Zone 21 & 22

CABLE GLAND

►Ex-QM03-C1K Series

Single seal, suitable for armored cable.  
Degree of protection: IP66/IP68.



Model:	Ex-QM03-C1K
Marking ATEX:	II2 GD Ex eb IIC Gb/ Ex db IIC Gb Ex tb IIIC Db IP66/IP68
Marking IECEx:	Ex eb IIC Gb/ Ex db IIC Gb Ex tb IIIC Db IP66/IP68
Ambient Temperature:	-50°C≤Tamb≤+80°C
Connection Thread:	Metric Thread, NPT Thread
Standard:	IEC60079-0:2017, IEC60079-1:2014, IEC60079-7:2017, IEC60079-31:2013, EN60079-0:2012+A11:2013, EN60079-1:2014, EN60079-7:2015, N60079-31:2014
Rating:	Zone 1 & 2, Zone 21 & 22

►Ex-QM04-B1K Series

Dual seal, suitable for armored cable.  
Degree of protection: IP66/IP68.



Model:	Ex-QM04-B1K
Marking ATEX:	II2 GD Ex eb IIC Gb/ Ex db IIC Gb Ex tb IIIC Db IP66/IP68
Marking IECEx:	Ex eb IIC Gb/ Ex db IIC Gb Ex tb IIIC Db IP66/IP68
Ambient Temperature:	-50°C≤Tamb≤+80°C
Connection Thread:	Metric Thread, NPT Thread
Standard:	IEC60079-0:2017, IEC60079-1:2014, IEC60079-7:2017, IEC60079-31:2013, EN60079-0:2012+A11:2013, EN60079-1:2014, EN60079-7:2015, N60079-31:2014
Rating:	Zone 1 & 2, Zone 21 & 22

CABLE GLAND

►Ex-QM05-C1K Series

Single seal, suitable for armored cable.  
Degree of protection: IP66/IP68.



Model:	Ex-QM05-C1K
Marking ATEX:	II2 GD Ex eb IIC Gb/ Ex db IIC Gb Ex tb IIIC Db IP66/IP68
Marking IECEx:	Ex eb IIC Gb/ Ex db IIC Gb Ex tb IIIC Db IP66/IP68
Ambient Temperature:	-50°C≤Tamb≤+80°C
Connection Thread:	Metric Thread, NPT Thread
Standard:	IEC60079-0:2017, IEC60079-1:2014, IEC60079-7:2017, IEC60079-31:2013, EN60079-0:2012+A11:2013, EN60079-1:2014, EN60079-7:2015, N60079-31:2014
Rating:	Zone1 & 2, Zone 21 & 22

►Ex-QM06-B1K Series

Dual seal, suitable for armored cable.  
Degree of protection: IP66/IP68.



Model:	Ex-QM06-B1K
Marking ATEX:	II2 GD Ex eb IIC Gb/ Ex db IIC Gb Ex tb IIIC Db IP66/IP68
Marking IECEx:	Ex eb IIC Gb/ Ex db IIC Gb Ex tb IIIC Db IP66/IP68
Ambient Temperature:	-50°C≤Tamb≤+80°C
Connection Thread:	Metric Thread, NPT Thread
Standard:	IEC60079-0:2017, IEC60079-1:2014, IEC60079-7:2017, IEC60079-31:2013, EN60079-0:2012+A11:2013, EN60079-1:2014, EN60079-7:2015, N60079-31:2014
Rating:	Zone 1 & 2, Zone 21 & 22

►Ex-QM10-B1 Series

ATEX and IECEx Certified. Ex d structure.  
Single seal, suitable for unarmored cable.  
Degree of protection: IP66/IP68.



Model:	Ex-QM10-B1
Marking ATEX:	II2 GD Ex eb IIC Gb/ Ex db IIC Gb Ex tb IIIC Db IP66/IP68
Marking IECEx:	Ex eb IIC Gb/ Ex db IIC Gb Ex tb IIIC Db IP66/IP68
Ambient Temperature:	-50°C≤Tamb≤+80°C
Connection Thread:	Metric Thread, NPT Thread
Standard:	IEC60079-0:2017, IEC60079-1:2014, IEC60079-7:2017, IEC60079-31:2013, EN60079-0:2012+A11:2013, EN60079-1:2014, EN60079-7:2015, N60079-31:2014
Rating:	Zone 1 & 2, Zone 21 & 22



CABLE GLAND

► Ex-QM12-A1 Series

Ex e structure. Sealing ring, suitable for unarmored cable.  
Degree of protection: IP66/IP68.



Model:	Ex-QM12-A1
Marking ATEX:	II2 GD Ex eb IIC Gb Ex tb IIIC Db IP66/IP68
Marking IECEx:	Ex eb IIC Gb Ex tb IIIC Db IP66/IP68
Ambient Temperature:	-50°C≤Tamb≤+80°C
Connection Thread:	Metric Thread, NPT Thread
Standard:	IEC60079-0:2017, IEC60079-1:2014, IEC60079-7:2017, IEC60079-31:2013, EN60079-0:2012+A11:2013, EN60079-1:2014, EN60079-7:2015, N60079-31:2014
Rating:	Zone 1 & 2, Zone 21 & 22

► Ex-QM13-B1T Series

Dual seal, suitable for unarmored cable.  
Degree of protection: IP66/IP68.



Model:	Ex-QM13-B1T
Marking ATEX:	II2 GD Ex eb IIC Gb/EX db IIC Gb Ex tb IIIC Db IP66/IP68
Marking IECEx:	Ex eb IIC Gb/EX db IIC Gb Ex tb IIIC Db IP66/IP68
Ambient Temperature:	-50°C≤Tamb≤+80°C
Connection Thread:	Metric Thread, NPT Thread
Standard:	IEC60079-0:2017, IEC60079-1:2014, IEC60079-7:2017, IEC60079-31:2013, EN60079-0:2012+A11:2013, EN60079-1:2014, EN60079-7:2015, N60079-31:2014
Rating:	Zone 1 & 2, Zone 21 & 22

► Ex-QM18-C1 Series

Single seal, suitable for unarmored cable.  
Degree of protection: IP66/IP68.



Model:	Ex-QM18-C1
Marking ATEX:	II2 GD Ex eb IIC Gb/EX db IIC Gb Ex tb IIIC Db IP66/IP68
Marking IECEx:	Ex eb IIC Gb/EX db IIC Gb Ex tb IIIC Db IP66/IP68
Ambient Temperature:	-50°C≤Tamb≤+80°C
Connection Thread:	Metric Thread, NPT Thread
Standard:	IEC60079-0:2017, IEC60079-1:2014, IEC60079-7:2017, IEC60079-31:2013, EN60079-0:2012+A11:2013, EN60079-1:2014, EN60079-7:2015, N60079-31:2014
Rating:	Zone 1 & 2, Zone 21 & 22

CABLE GLAND

► Ex-QM21-C1K Series

Single seal, suitable for armored cable.  
Degree of protection: IP66/IP68.



Model:	Ex-QM22-C1K
Marking ATEX:	II2 GD Ex eb IIC Gb/EX db IIC Gb Ex tb IIIC Db IP66/IP68
Marking IECEx:	Ex eb IIC Gb/EX db IIC Gb Ex tb IIIC Db IP66/IP68
Ambient Temperature:	-50°C≤Tamb≤+80°C
Connection Thread:	Metric Thread, NPT Thread
Standard:	IEC60079-0:2017, IEC60079-1:2014, IEC60079-7:2017, IEC60079-31:2013, EN60079-0:2012+A11:2013, EN60079-1:2014, EN60079-7:2015, N60079-31:2014
Rating:	Zone 1 & 2, Zone 21 & 22

► Ex-QM22-B1K Series

Dual seal, suitable for armored cable.  
Degree of protection: IP66/IP68.



Model:	Ex-QM22-B1K
Marking ATEX:	II2 GD Ex eb IIC Gb/EX db IIC Gb Ex tb IIIC Db IP66/IP68
Marking IECEx:	Ex eb IIC Gb/EX db IIC Gb Ex tb IIIC Db IP66/IP68
Ambient Temperature:	-50°C≤Tamb≤+80°C
Connection Thread:	Metric Thread, NPT Thread
Standard:	IEC60079-0:2017, IEC60079-1:2014, IEC60079-7:2017, IEC60079-31:2013, EN60079-0:2012+A11:2013, EN60079-1:2014, EN60079-7:2015, N60079-31:2014
Rating:	Zone 1 & 2, Zone 21 & 22

PLUG & SOCKET

► CZ81-16/32/63/125 Series

Copper free aluminum explosion-proof enclosure.  
Plastic-sprayed surface. Three types of enclosures optional.



Model:	EX-CZ81-16	EX-CZ81-32	EX-CZ81-63	EX-CZ81-125
Voltage Option:	Max. AC690V	Max. AC690V	Max. AC690V	Max. AC690V
Current (optional):	16A	32A	63A	125A
Socket Cable Entry:	2×M25×1.5(3P/4P), 2×M32×1.5(5P)	2×M32×1.5	2×M40×1.5	1×M63×1.5
Plug Cable Entry:	1×M25×1.5(3P/4P), 1×M32×1.5(5P)	1×M32×1.5	1×M50×1.5	1×M50×1.5
Cable Cross-sectional Area:	2.5mm²~4mm²	4mm²~6mm²	10mm²~16mm²	25mm²~35mm²
Dimension (mm):	350x192	350x192	505x240	675x400x240
Protection Class:	IP66	IP66	IP66-IP67	IP66-IP67
Ambient Temperature:	-60°Cto +55°C	-60°Cto +55°C	-60°Cto +55°C	-60°Cto +55°C
Standard:	EN 60079-0, EN 60079-1, EN 60079-31; IEC 60079-0, IEC 60079-1, IEC 60079-31			
Compliance:	ATEX/IECEX			
Rating:	Zone 1&2, Zone 21&22			

► CZ82-16/32/63/125 Series

GRP (glass fibre-reinforced polyester resin) enclosure, stainless steel exposed fastener.  
ATEX & IECEX approved. Various dimensions to meet different requirements.



Model:	EX-CZ82-16	EX-CZ82-32	EX-CZ82-63	EX-CZ82-125
Voltage Option:	Max. AC250V	Max. AC250V	Max. AC250V	Max. AC250V
Current (optional):	10A, 16A	20A, 32A	50A, 60A, 63A	100A, 125A
Socket Cable Entry:	Standard 1 x M25x1.5 cable gland(plastic); 1 x M25x1.5 plug (plastic)	Standard 1 x M40x1.5 cable gland(plastic); 1 x M40x1.5 plug (plastic)	Standard 1 x M50x1.5 cable gland(plastic)	Standard 1 x M63x1.5 cable gland(plastic); 1 x M63x1.5 plug (plastic)
Cable Cross-sectional Area:	2.5mm²~4mm²	4mm²~6mm²	10mm²~16mm²	25mm²~35mm²
Protection Class:	IP66	IP66	IP66	IP66
Ambient Temperature:	-20°Cto +55°C	T5: -20°Cto +40°C T4: -20°Cto +55°C	T5: -20°Cto +40°C T4: -20°Cto +55°C	-20°Cto +55°C
Standard:	EN 60079-0, EN 60079-1, EN 60079-7, EN 60079-31; IEC 60079-0, IEC 60079-1, IEC 60079-31, IEC 60079-31			
Compliance:	ATEX/IECEX			
Rating:	Zone 1&2, Zone 21&22; Class I, Zone 1 and Zone 2; Class I, Division 2, Groups A, B, C, D			



▼ INTERIOR RETROFITS & LUMINAIRES

- Venas interior luminaires are designed to provide both the efficiency and maintenance-free operation of LED with the form factors and features that designers, engineers, and architects require for a full range of applications. These luminaires are ideal for commercial and industrial environments and add to both the aesthetics and quality of illumination. Venas products are used around the world in retail, education, factories and warehouses, and many more applications.
- Global, national and regional compliance to all the most recent standards for safety, performance and application efficacy.
- Global production capacities with regional warehousing to fulfill project requirements of any scale large or small.
- Constant design and performance updates responding to real-world demands for the newest features in all market segments.
- With millions of units manufactured and installed, Venas products demonstrate a product reliability rate second to none in the lighting industry.



HIGH BAY LUMINAIRES



►UFO(U-C) Series

It features a black die-cast aluminum housing. Dark powder coat corrosion resistant finish provides long hours salt fog rating. Corrosion resistant external hardware standard.



Model:	U-100WC1 YZTXX	U-150WC2 YZTXX	U-200WC3 YZTXX	U-240WC4 YZTXX	U-300WC4 YZTXX
Rated Wattage(W):	100	150(150/100/80)	200(200/150/100)	240(240/200/150)	300(300/240/200)
Rated Lumen 1(Lm):	13,000	19,500	26,000	31,200	39,000
Rated Lumen 2(Lm):	17,000	25,500	34,000	40,800	51,000
Light Efficiency(Lm/W):	130/170				
Dimension(mm):	Ø253×149	Ø308×155	Ø353×H160	Ø404×168	Ø404×168
Voltage:	120-277V/120-347V				
CRI:	70/80(optional)				
CCT:	2,200/2,700/3,000/4,000/4,500/5,000K/5,500/6,500K				
Compliance:	DLC/ETL/CE/CB/ENEC/EMC/SAA				
Beam Angle(Deg):	60°/90°/120°				
Power Factor:	>0.9				
Ambient Temperature:	-40°F (-40°C) to 131°F(+55°C)				
Protection Class:	IP65				



►UFO(U-E)Series

It features a black die-cast aluminum housing. Dark powder coat corrosion resistant finish provides long hours salt fog rating. Corrosion resistant external hardware standard.



Model:	U-100WE1 YZTXX	U-150WE2 YZTXX	U-200WE3 YZTXX	U-240WE3 YZTXX
Rated Wattage(W):	100	150(150/100/80)	200(200/150/100)	240(240/200/150)
Rated Lumen 1(Lm):	13,000	19,500	26,000	31,200
Rated Lumen 2(Lm):	17,000	25,500	34,000	40,800
Light Efficiency(Lm/W):	130/170			
Dimension(mm):	Φ248×H167	Φ289×174	Φ336×191	Φ336×191
Voltage:	120-277V/120-347V			
CRI:	70/80(optional)			
CCT:	2,200/2,700/3,000/4,000/4,500/5,000K/5,500/6,500K			
Compliance:	DLC/ETL/CE/CB/ENEC/EMC/SAA			
Beam Angle(Deg):	90°/120°(fixed); 60°-105°(adjustable)			
Power Factor:	>0.9			
Ambient Temperature:	-40°F (-40°C) to 131°F(+55°C)			
Protection Class:	IP65			

HIGH BAY LUMINAIRES



►UFO(U-F)Series

It features a black die-cast aluminum housing. Dark powder coat corrosion resistant finish provides long hours salt fog rating. Corrosion resistant external hardware standard.



Model:	U-400W/500WF YZTXX
Rated Wattage(W):	400/500
Rated Lumen 1(Lm):	54,000(15°; 400W); 65,000(15°; 500W); 82,500(30°/45°/60°; 500W); 68,000(30°/45°/60°; 400W)
Light Efficiency(Lm/W):	135(15°; 400W); 130(15°; 500W); 165(30°/45°/60°; 500W); 170(30°/45°/60°; 400W)
Dimension(mm):	Ø360xH232
Voltage:	120-277V
CRI:	70/80(optional)
CCT:	2700K-6500K
Compliance:	CE/CB/SAA/ENEC/RoHS
Beam Angle(Deg):	15°/30°/45°/60°
Power Factor:	>0.9
Ambient Temperature:	-40°F (-40°C) to 122°F (+50°C)
Protection Class:	IP65



►Water-proof Linear High Bay HB-C Series

Water-proof linear high bay light function well in misty environments with low operating cost and a 100% maintenance free lifespan.



Model:	HB-C100W	HB-C150W
Rated Wattage(W):	100	150
Light Efficiency(Lm/W):	180	
Rated Lumen(Lm):	18,000	27,000
Dimension(mm):	415x341x75	
Voltage:	120-277V/120-347V/277-480V	
CRI:	70/80(optional)	
CCT:	3000K-6500K	
Compliance:	ETL/DLC	
Beam Angle(Deg):	60°/90°/120°	
Power Factor:	>0.9	
Ambient Temperature:	-40°C to 50°C (40°F to 122°F)	
Protection Class:	IP66	

HIGH BAY LUMINAIRES

► Linear High Bay Series

Designed for economical retrofit cost, low operating cost and a 100% maintenance free lifespan. The Linear High Bay Series replace all types of fluorescent high bay troffers in warehouse, supermarket, retail, education and all other general area interior illumination applications.



Ultrathin 35mm

Model:	H2-80W/100W/160W -XD-40K/45K/50K	H3-80W/100W/160W -XD-40K/45K/50K; H3-100W/160W/220W -XD-40K/45K/50K	H5-100W/160W/220W -XD-40K/45K/50K H5-160W/220W/320W -XD-40K/45K/50K	H6-160W/220W/320W -XD-40K/45K/50K
Rated Wattage(W):	80/100/160	80/100/160/220	100/160/220/320	160/220/320
Light Efficiency(Lm/W):	135/150			
Dimension(mm):	600x268x36	1208x268x36	600x400x36	1208x400x36
Voltage:	AC 120-277V			
Control System:	Microwave Dimmer			
CCT:	3,500-5,000K			
Compliance:	UL/DLC			
Beam Angle(Deg):	105			
Power Factor:	0.9			
CRI:	80			
Protection Class:	IP20			

COMMERCIAL GRADE LUMINAIRES

► Decorative Suspended Food Series

The Decorative Suspended Food Series is a commercial grade solution where decorative general illumination is required.



Model:	FX-HBPH
Rated Wattage(W):	50/80/100/120/150
Rated Lumen(Lm):	7,000/11,200/14,000/16,800/21,000
Voltage Options:	AC 100-277V
CCT Options:	3,000/3,500/4,000/4,500/5,000K
Dimming:	0-10VDC Standard
Beam Angle(Deg):	45/90
CRI:	>80
Compliance:	UL/cUL



▼ EXTERIOR LUMINAIRES

- Venas exterior luminaires are designed to provide both the efficiency and maintenance-free operation of LED with the form factors and features that designers, engineers, and architects require for a full range of applications. These luminaires are ideal for commercial, industrial, government, institutional, and municipal applications.
- Global, national and regional compliance to all the most recent standards for safety, performance, and application efficacy.
- Global production capacities with regionalized warehousing to fulfill project requirements of any scale.
- Constant design and performance updates responding to real-world demands for the newest features in all market segments.
- With millions of units manufactured and installed, Venas products demonstrate a product reliability rate second to none in the lighting industry.



EXTERIOR AREA LIGHTING LUMINAIRES



► Shoebox F Series

Die-cast aluminum body and frame-corrosion resistant. Easy installation and maintenance. Extra photocell sensor available. Motion sensor and daylight sensor. Color changeable and power adjustable.



Model:	F1	F2	F3	F5
Rated Wattage(W):	50/80/100	80/100/150	100/150/200	100/250/300
Efficiency:	140lm/W			
Voltage Options:	AC120-277V/120-347V/200-480V			
CCT Options:	2,700-6,500K			
Optics(IES Type):	T2/T3/T4/T5			
CRI:	70/80			
Power Frequency:	50/60Hz			
Power Factor:	0.95			
Protection Class:	Wet Location and IP65			
Working Lifespan:	>50,000H			
Compliance:	ETL/DLC/ENEC/CB/SAA/CE/EMC/ROHS/ERP			



► Street Light H Series

Lumen output up to 150/170 lumens per watt. Reduces energy consumption up to 60%. Easy installation. Protection degree is Ip65. It is ideal for various outdoor areas to bring outstanding lighting.



Model:	ST-H 20-60WUXYZ	ST-H 80/100/120/150WUXYZ	ST-H 180/200/220WUXYZ
Rated Wattage(W):	20-60	80/100/120/150	180/200/220
Rated Lumen(Lm):	3,000-9,000;3,400-10,200	12,000/14,000/18,000/22,500	27,000/30,000/33,000
Voltage Options:	120-277/277-480V		
CCT Options:	3,000/4,000/5,000/6,000K		
Beam Angle:	T3M		
CRI:	70/80		
Protection Class:	IP65		
Operating Temperature:	-40°C to +50°C		
Compliance:	UL/DLC		

EXTERIOR AREA LIGHTING LUMINAIRES



► LED Street Light I Series

With highly efficient, low energy-consumption street light, I series bring to you convenience and safety at outdoor areas. Technology innovations are made to ensure that the light can withstand tough environments, and to reduce the maintenance cost to the minimum.



Model:	ST-xxWI1 xyzp	ST-xxWI2 xyzp	ST-xxWI3 xyzp	ST-xxWI4 xyzp	ST-xxWI5 xyzp
Rated Wattage(W):	50	80/100	150	200/250	300
Voltage Options:	AC120-277V				
CCT Options:	2700-6500K				
Beam Angle:	T2M/T3M/T4M				
Efficiency:	130 lm/W; 150 lm/W				
CRI:	70/80				
Power Factor:	≥0.95				
Protection Class:	IP66				
Operating Temperature:	-40°C (-40°F )-+50°C (122°F )				
Compliance:	ENEC/CB/SAA/CE/EMC/ROHS/ERP				



► Street Light L Series

L series produce ideal light distribution with the highest reliability level-incredibly high over 93% total efficiency, while saving up to 80% energy compared with traditional lighting. With die-cast aluminum housing, rugged and weather-tight design, this durable luminaire can withstand the most demanding elements.



Model:	ST-L150W UXYZ	ST-L1100W UXYZ	ST-L2150W UXYZ	ST-L2200WW UXYZ	ST-L2240W UXYZ
Rated Wattage(W):	50	100	150	200	240
Rated Lumen(Lm):	7,500	15,000	22,500	30,000	36,000
Voltage Options:	AC120-277V				
CCT Options:	3,000-6,500K				
Efficiency:	150 lm/W				
CRI:	70/80				
Power Factor:	≥0.9				
Beam Angle:	T2M/T3M/T4M				
Operating Temperature:	-40°C (-40°F )-+50°C (122°F )				
Compliance:	ENEC/CB/SAA/CE/EMC/ROHS/ERP				

EXTERIOR AREA LIGHTING LUMINAIRES



▶LED Sports Light J/L Series

Extremely long life-span. Low working wattage for energy saving. High lumen efficiency and high CRI. High vibration and impact resistant. Friendly to environment without mercury. Easy and secure installation. Uniformity lighting distribution. 3-5 years warranty. Listed on ETL.



Model:	SP-J1xxW XYZP	SP-J2xxW XYZP	SP-L2xxW XYZP
Rated Wattage(W):	400/500/600	720/800/1000/1200	1500/1800
Rated Lumen(LM):	64,000/75,000/84,000	118,000/128,000/150,000/162,000	217,500/243,000
Voltage Options:	AC120-277V/AC277-480V/AC200-240V/AC220-240V		
CCT Options:	2700-6500K/RGB/RGBW		
Beam Angle(Deg):	15°/30°/45°/60°	15°/30°/45°/60°/80°	15°/30°/45°
CRI:	RA70/RA80(Optional)/RA90(Optional)		
Protection Class:	Wet Location IP66		
Ambient Temperature:	-40°Cto+50°C		
Mounting:	Bracket Mounting		
Compliance:	ENEC,CB,CE,SAA,ETL,ROHS,ERP,DLC		



▶LED Sports Light M Series

Extremely long life-span. High durability and reliability. Low working wattage for energy saving. Good heat dissipation. High vibration and impact resistant. Friendly to environment without mercury. Easy and secure installation. Ideal for harsh environment. Uniformity lighting distribution. Listed on ETL.



Model:	SP-M1xxW XYZP	SP-M2xxW XYZP	SP-M3xxW XYZP	SP-M4xxW XYZP
Rated Wattage(W):	400/500/600/650	800/1000/1200/1300	1500/1800/1950	2000/2400/2600
Rated Lumen(Lm):	52,000/65,000/	104,000/130,000/	195,000/234,000/	260,000/321,000/
	78,000/84,500	156,000/169,000/	253,500/225,000/	338,000/300,000/
	60,000/75,000/	120,000/150,000/	270,000/292,500	360,000/390,000
	90,000/97,500	180,000/195,000		
Light Efficiency:	130/150 lm/W			
Voltage Options:	AC120-277V/AC277-480V/AC200-240V/AC220-240V			
CCT Options:	2700-6500K/RGB/RGBW			
Beam Angle(Deg):	15°/30°/45°/60°/120°			
CRI:	70/80			
Power Factor:	0.95			
Protection Class:	IP66			
Compliance:	ENEC,CB,CE,SAA,ETL,ROHS,DLC			

EXTERIOR AREA LIGHTING LUMINAIRES



▶LED Flood Light N Series

N series produce ideal light distribution with the highest reliability level-incredibly high over 93% total efficiency. With die-cast aluminum(ADC12)housing, rugged and weather-tight design, this durable luminaire can withstand the most demanding elements.



Model:	SP-N1xxW XYZP	SP-N2xxW XYZP	SP-N3xxW XYZP	SP-N4xxW XYZP	SP-N5xxW XYZP
Rated Wattage(W):	250/300/350	500/600/700	750/900/1050	1200/1400	1500/1750
Light Efficiency( lm/W):	130 lm/W, 150 lm/W				
Power Factor:	0.95				
Beam Angle(Deg):	15°/30°/45°/60°/90°/120°/T30x90/T3VS/T2VS				
Voltage Options:	AC120-277V/AC277-480V/AC200-240V/AC220-240V				
CCT Options:	4000K/5000K/6500K/RGB/RGBW				
CRI:	70/80				
Power Factor:	0.95				
IK Rating:	IK08				
Operating Temperature:	-40°C(-40°F)-+50°C(122°F)				
Compliance:	ENEC, CB, CE, SAA, ROHS, ERP, EMI				



▶LED Flood Light Q Series

Q series produce ideal light distribution with the highest reliability level-incredibly high over 93% total efficiency. With die-cast aluminum(ADC12)housing, rugged and weather-tight design, this durable luminaire can withstand the most demanding elements.



Model:	SP-Q2xxW XYZP	SP-Q3xxW XYZP	SP-Q4xxW XYZP
Rated Wattage(W):	500/600/700	750/900/1050	1200/1400
Light Efficiency( lm/W):	130 lm/W, 150 lm/W		
Power Factor:	0.95		
Voltage Options:	AC120-277V/AC277-480V/AC200-240V/AC220-240V		
CCT Options:	4000K/5000K/6500K/RGB/RGBW		
IK Rating:	IK08		
CRI:	70/80		
Working Temperature:	-40°C(-40°F)-+50°C(122°F)		
Beam Angle(Deg):	30°/45°/60°/90°/120°/T30x90/T3VS/T2VS		
US Compliance:	ENCE, CB, CE, SAA, ROHS,ERP, EMI		

EXTERIOR AREA LIGHTING LUMINAIRES

► Flood Light R Series

R series produce ideal light distribution with the highest reliability level-incredibly high over 93% total efficiency. With die-cast aluminum(ADC12)housing, rugged and weather-tight design, this durable luminaire can withstand the most demanding elements.



Model:	FL-R1xxW UXYZ	FL-R2xxW UXYZ	FL-R3xxW UXYZ	FL-R4xxW UXYZ
Rated Wattage(W):	30/40/50	60/80/100	100/120/150	100/150/180/200
Rated Lumen(lm):	3900/5200/6500	7800/10,400/13,000	13,000/16,900/19,500	13,000/19,500/23,400/26,000
Voltage Options:	AC120-277V/AC120-347V/277-480V			
Beam Angle(Deg):	120°	120°	120°	120°/15°
CRI:	70/80			
CCT Options:	2,200K/2,700K/3,000K/4,000K/5,000K/5,700K/6,500K			
Light Efficiency( lm/W):	130			
Working Temperature:	-40°C (-40°F )-+50°C (122°F )			
US Compliance:	ETL,DLC			

► Flood Light D Series

The Flood Lighting Series is an economical solution for interior or exterior-all weather general illumination applications.



	FL-D1 20W/30W UXYZ	FL-D2 50W UXYZ	FL-D3 80W UXYZ	FL-D4 100W/120W UXYZ	FL-D5 150W UXYZ	FL-D6 200/240W UXYZ	FL-D7 300W/350W/400W UXYZ
Model:							
Rated Wattage(W):	20/30	50	80	100/120	150	200/240	300/350/400
Light Efficiency( lm/W):	130/160						
Voltage Options:	AC120-277V/120-347V/200-480V						
CCT Options:	3,000-6,000K						
Beam Angle(Deg):	15°/30°/45°/60°/90°/120°/T30x90/T3VS/T2VS						
CRI:	70/80						
PF:	≥0.9						
Compliance:	ENEC/CB/CE/SAA/ROHS/ETL/DLC						

EXTERIOR AREA LIGHTING LUMINAIRES

► Flood Light FL09 Series

DALI/DMX512 intelligent control. RGB/RGBW function. ADC12 aluminum for good cooling performance.



Model:	FL09
Rated Power:	1500W/1650W/1800W
Rated Voltage:	AC100-277V/AC277-480V
Efficiency (Lm/W):	130, 150
Rated Lumen (Lm):	195,000-270,000
Dimming:	0-10V
Power Factor:	0.95
Surge Protection:	10kV
Ambient Temperature:	-40°C (-40°F )-+50°C (122°F )
CCT:	4000K/5000K/6500K
Beam Angle:	11°/18°/25°
IK Rating:	IK08

► LED Tunnel Light D Series

Adapted to a wide range of different tunnel applications to provide safety at all times. High level of protection against corrosion, impact, water, and dust. Adjustable mounting bracket for application flexibility. A movable door to simplify and expedite installation. Ergonomic light distribution to achieve even illuminating effect.

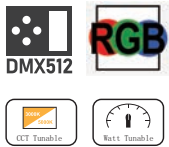


	U-D1xxW UXYZ	U-D2xxW UXYZ	U-D3xxW UXYZ	U-D4xxW UXYZ
Model:				
Rated Wattage(W):	30/50	80/100	120/150	180/200/240
Rated Lumen(Lm):	3900/6500	10,400/13,000	15,600/19,500/26,400	26,000/31,200
Voltage Options:	AC100-277V/100-347V/200-480V			
CCT Options:	3000-6500K			
Beam Angle(Deg):	15°/30°/60°/90°/120°/T2M/T3M/T4M			
CRI:	70/80			
Protection Class:	IP66			
Ambient Temperature:	-40°C (-40°F )-+50°C (122°F )			
Mounting:	Bracket Mounting			
Compliance:	ENEC/CB/CE/EMC/SAA			



## EXTERIOR AREA LIGHTING LUMINAIRES

### ► Solar Street Light ST-Z Series



ST-Z Solar LED street light features all in one design function, low profile design, with PIR/ microwave motion sensor and smart controller all built in. Bilateral Solar Panel design. Suitable for remote region, non electricity supply zone.



Model:	ST-Z1 10W	ST-Z2 20W	ST-Z3 30W	ST-Z4 50W	ST-Z5 60W
Rated Wattage(W):	10W	20W	30W	50W	60W
Solar Panel:	30W	40W	60W	70W	90W
Light Efficiency( lm/W):	200; 190(80Ra)				
Power Factor:	0.95				
Voltage Options:	3.2V; 12.8V				
CCT Options:	3000K/4000K/5000K/5700K/6500K				
IK Rating:	IK08				
CRI:	70/80				
Working Temperature:	-10°C to 50°C (14°F to 122°F)				
Beam Angle(Deg):	T2/T3/T4				
US Compliance:	CE/FCC/ROHS				

## EXTERIOR WALL MOUNT LUMINAIRES

### ► Flush Mount Canopy Series



The ZY-SCP series is designed for typical use in gas station and other retail canopies and architectural overhang applications for high level illumination.



Model:	CP-100W AN50D120	CP-120W AN50D120	CP-150W AN50D120
Rated Wattage(W):	100	120	150
Rated Lumen (Lm):	14,000	16,800	21,000
Voltage Options:	AC100-277V/100-347V/200-480V		
CCT Options:	3,000/3,500/4,000/4,500/5,000K		
Beam Angle(Deg):	120		
CRI:	70/80		
Protection Class:	IP65		
Compliance:	UL/cUL		