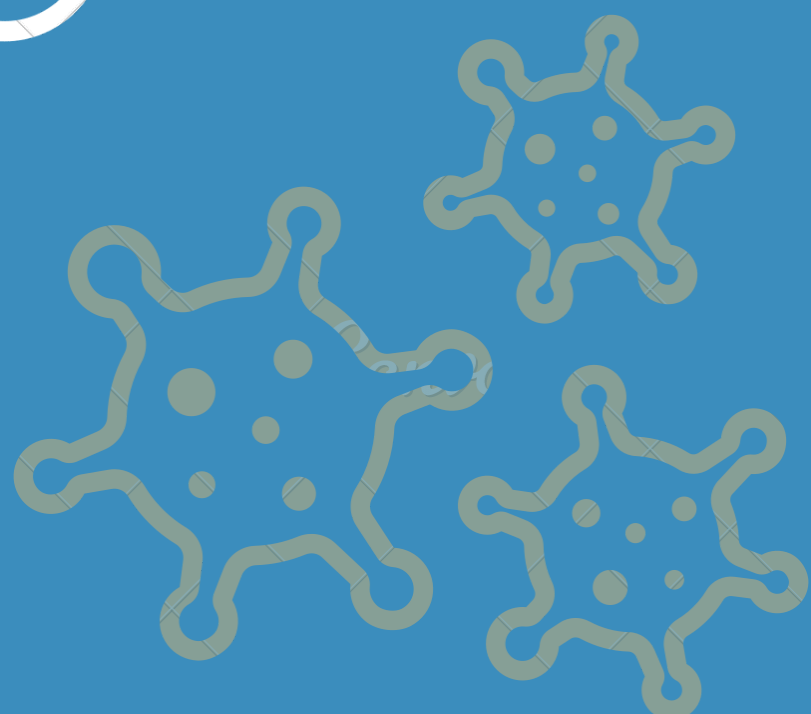


ORGANISATIONS HAVING TO LIVE WITH COVID 19 FROM HERE ON

WHEN 90% VACCINATION
RATES ARE ACHIEVED AND
GOVERNMENTS TAKE OFF
REGULATORY RESTRICTIONS,
WORKPLACE RESPONSIBILITY
FOR THE SAFETY OF THEIR STAFF
GOES TO THE EMPLOYER



AI PROCESS MONITORING FOR EVERYTHING
YOU CAN DO TO MITIGATE RISK



IF THE EMPLOYER IS AWARE OF ANY
POTENTIAL RISK, THEN THEY HAVE TO TAKE
ACTION TO REDUCE THAT RISK OR PREVENT IT,
“FAILING TO DO SO COULD BE A BREACH OF
DUTY OF CARE.”

ARE YOU PREPARED

- COVID 19, SAFE WORK PROTOCOL MANAGEMENT
- MASK WEARING
- SOCIAL DISTANCING
- UNSAFE BEHAVIOUR
- ABNORMAL BEHAVIOUR
- REPORTS ON PERIODIC CLEANING

DID YOU

There were 1222 workers' compensation claims related to COVID-19 lodged in 2020. Once restrictions are lifted & borders are open, this is predicted to increase exponentially in the coming years.

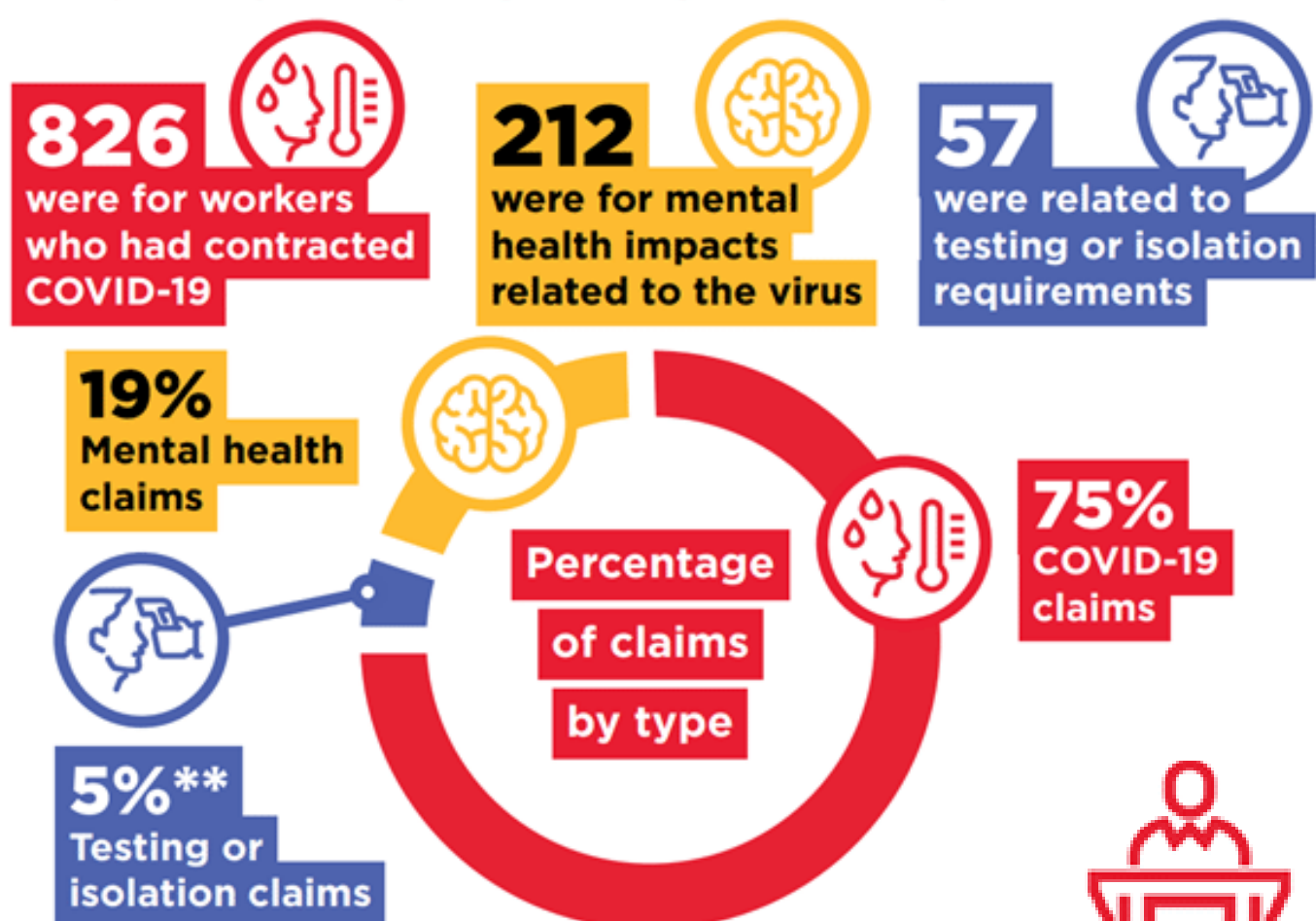
A State Insurance Regulatory Authority spokeswoman said its estimated cost in these claims is **\$638 million** at this point of time.

As workers return to work with reduced restrictions, employers and building owners must focus on their duty of care under work, health, and safety laws. In addition, a breach could potentially give surge to being sued for negligence or to prosecution by Safe Work.

Organizations risk a rise in workers' compensation claims, premiums and risk claims by the public including class actions in the event of an outbreak."

KNOW ??

Of the 1,095 accepted and pending claims lodged from 1 January to 31 December 2020



swa.gov.au/coronavirus

COVID-19 related workers' compensation claims

From 1 January to 31 December 2020

Safe Work Australia has collected preliminary data on COVID-19 related workers' compensation claims.

1,222 workers' compensation claims have been lodged across Australia

of these: **974** claims were accepted
127 claims were rejected*
121 claims were pending

Claims by occupation

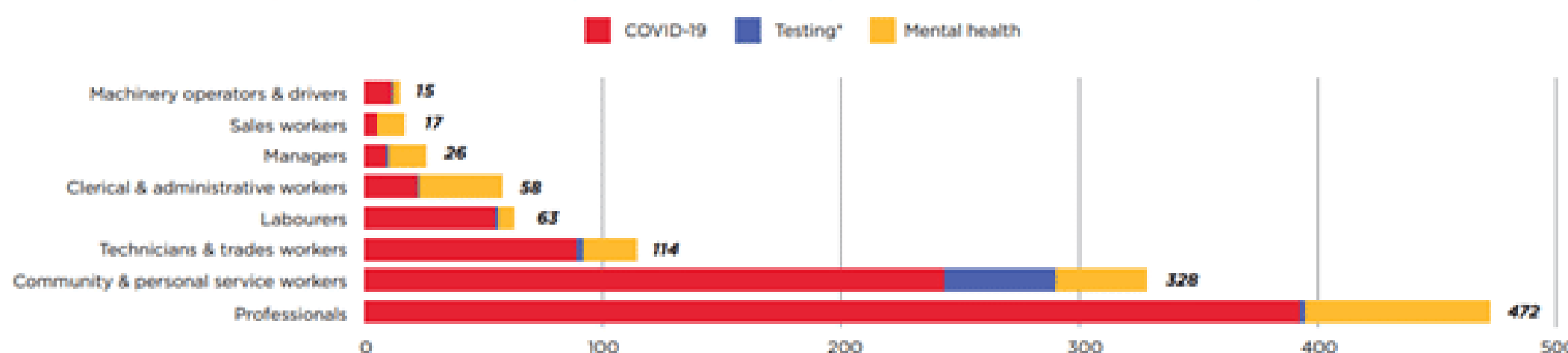
472

Professionals
43% of all claims made

Community and personal service workers
30% of all claims made

328

Number of approved and pending claims lodged by occupation and nature of injury or disease



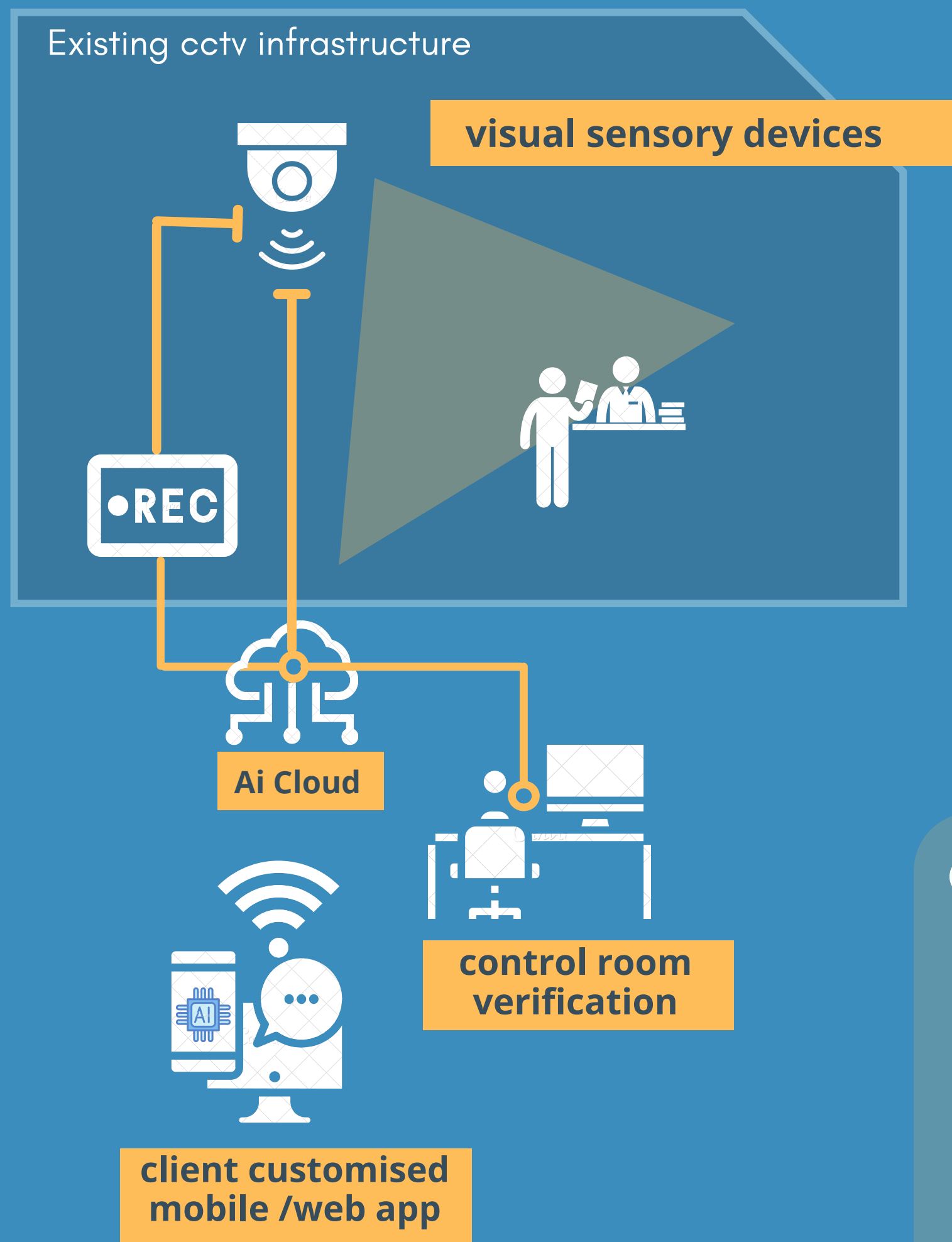
Coronavirus
COVID-19



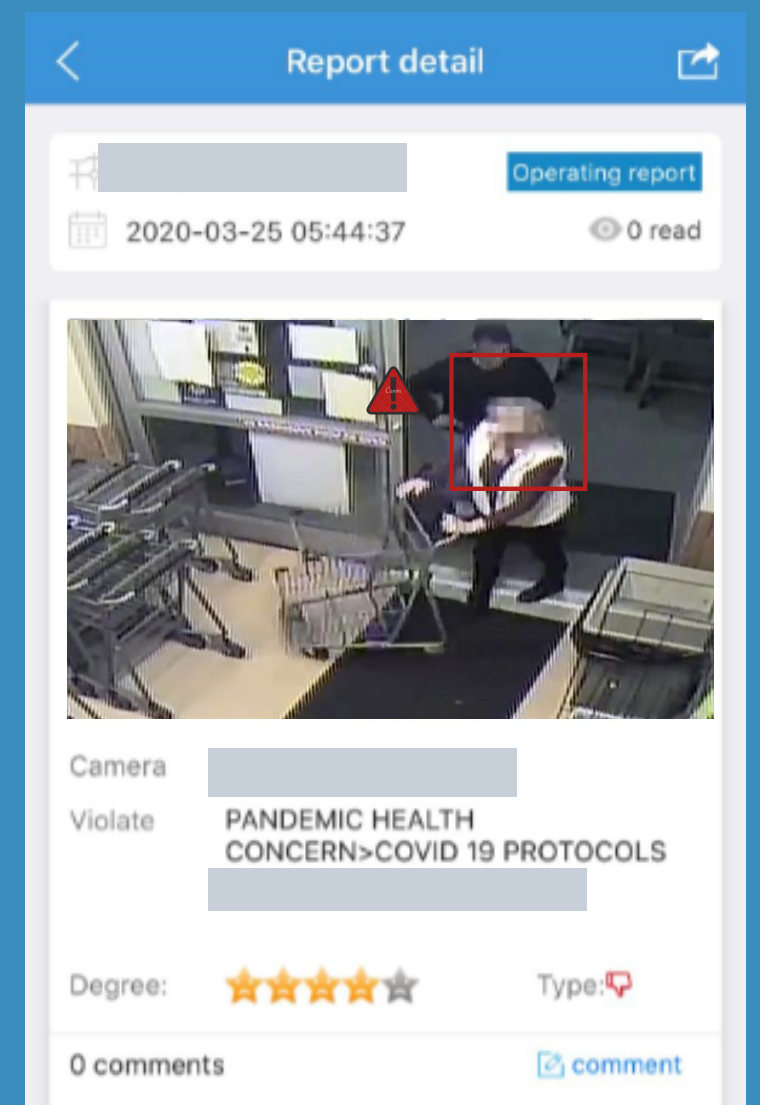
safe work australia

HOW IT WORKS

AI PROCESS MONITORING SYSTEM ARCHITECTURE



With the use of existing CCTV infrastructure, all Ai filtered reporting services are highly accurate. Visual-based verified reports on actionable events can be viewed through a customised web portal or a mobile app. In a court of law, these reports can be used as a service of evidence to mitigate your risk.



App interface

COVID 19 PROTOCOL ALGORITHMS

- FACE MASK DETECTION
- CROWD DETECTION
- ABNORMAL BEHAVIOUR DETECTION
- SOCIAL DISTANCING
- UNSAFE BEHAVIOUR DETECTION
- REPORTS ON PERIODIC CLEANING
- ENTRY VACCINATION CERTIFICATE CHECKING



FACE MASK
DETECTION



CROWD
DETECTION



ABNORMAL BEHAVIOUR
DETECTION



SOCIAL
DISTANCING



UNSAFE BEHAVIOUR
DETECTION

Contact us

PNR Engineering Systems Pte Ltd
35 Tannery Rd, #11-10 Tannery Block
Ruby Industrial Complex
Singapore 347740

o : +65 6742 8911
f : +65 6742 8700
E: sales@pnr-engineering.com.sg
W: pnr-engineering.com.sg

Powered
by

